

本书所收集文章及对应考试日期一览

Test 1

- Section 1** Booking a Hotel
2014年12月20日 2010年12月4日
- Section 2** An Overview of the Online Exchange Business
2011年1月15日
- Section 3** Talking About Reflective Journal Assignment
2012年10月27日 2011年4月2日
- Section 4** Chimpanzee Behaviours
2014年12月20日 2011年9月3日 2009年5月30日

Test 2

- Section 1** Enquiring About the Automobile Exhibition
2011年6月23日
- Section 2** An Introduction to the Medical Care Centre
2014年7月26日 2011年9月24日
- Section 3** Talking About a Lecture on the Influence of Light
2011年8月13日
- Section 4** The History of Football in the UK
2012年1月12日 2010年4月10日

Test 3

- Section 1** Talking About Driving Lessons
2015年1月29日 2012年9月15日
- Section 2** An Introduction to Mount Rushmore
2010年8月21日
- Section 3** Discussion of Tourism Course
2015年6月27日 2011年10月22日

Section 4 Company Outsourcing
2014 年 11 月 22 日 2014 年 1 月 25 日 2011 年 12 月 1 日

Test 4

- Section 1** Job Enquiry
2010 年 9 月 25 日
- Section 2** An Introduction to Homestays
2013 年 10 月 12 日 2010 年 5 月 29 日
- Section 3** Talking About a Project on Australian Study
2013 年 10 月 12 日 2010 年 11 月 20 日
- Section 4** Graphical Symbol
2012 年 12 月 8 日

Test 5

- Section 1** A Complaint Regarding a Flight
2010 年 4 月 15 日
- Section 2** An Introduction to the Car Rental Company
2010 年 7 月 17 日
- Section 3** Talking About the Major Problems of a Company
2013 年 11 月 9 日 2010 年 12 月 18 日
- Section 4** Relationship Between Climate and Architecture
2012 年 10 月 20 日

Test 6

- Section 1** House Rental Enquiry
2013 年 8 月 24 日 2011 年 2 月 12 日
- Section 2** An Introduction to an Australian Wild Zoo
2012 年 11 月 8 日
- Section 3** Talking About the Summer Course
2012 年 9 月 15 日
- Section 4** Roberts Company
2010 年 9 月 16 日

Test 1

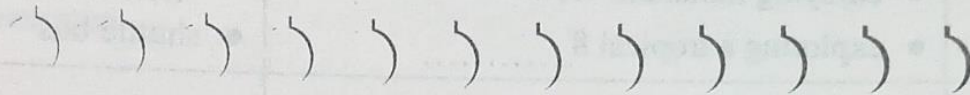


SECTION 1 Questions 1-10

Questions 1-4

Complete the notes below.

Write **NO MORE THAN TWO WORDS AND/OR A NUMBER** for each answer.



NOTES ON ISLAND HOTEL

<i>Example</i>	<i>Answer</i>
● Type of room required:	double room

Time

- The length of stay: approx 2 weeks
- Starting date: 25th April

Temperature

- Daytime: up to 1 °C
- Erratic weather

Transport

- Pick-up service is provided.
- Normally transferring to the airport takes about 2

Facilities

- en-suite facilities and a 3
- gym and spa facilities
- a large outdoor swimming pool
- three standard 4

Questions 5-10

Complete the table below.

Write **NO MORE THAN TWO WORDS** for each answer.

Day	Entertainment activities	Transportation
Tuesdays	<ul style="list-style-type: none">● learning to make 5● having a 6 concert	<ul style="list-style-type: none">● mini bus
Wednesdays	<ul style="list-style-type: none">● enjoying mountain view● exploring a tropical 8	<ul style="list-style-type: none">● 7● shuttle bus
Thursdays	<ul style="list-style-type: none">● having a fancy dinner● watching a spectacular display of 9	<ul style="list-style-type: none">● 10

SECTION 2 Questions 11-20

Questions 11-14



Choose the correct letter, *A*, *B* or *C*.

Online Exchange Business

- 11 The website is organised by
- A family members.
 - B friends.
 - C businessmen.
- 12 How long has the website been operated?
- A about 3 weeks
 - B about 3 months
 - C about 6 months
- 13 How many registered users are there in the website?
- A 1,000
 - B 1,500
 - C 2,000
- 14 Which country has the most users in the website?
- A Ireland
 - B UK
 - C Canada

Questions 15 and 16

Choose **TWO** letters, **A-E**.

Which **TWO** things are most popular among users?

- A** children's books
- B** textbooks
- C** computer games
- D** toys
- E** tools

Questions 17-20

Complete the sentences below.

Write **ONE WORD ONLY** for each answer.

17 The website will sort out items to help those who can't decide what to exchange.

18 Do not bother because everyone's is different.

19 Users will give on the completion of exchanges.

Criteria

- the quality of the item
- the ease of communication
- the **20** of delivering

SECTION 3 Questions 21-30



Questions 21-26

Choose the correct letter, **A**, **B** or **C**.

Reflective Journal Assignment

- 21 What should be firstly included in the reflective journal?
- A topics he is going to talk about
 - B study aims for the module
 - C suggestions from others
- 22 The woman has got
- A a lot of friends to help her.
 - B several books that may be useful.
 - C sufficient resources showing that she is a good technology user.
- 23 What was the man's biggest achievement in the past?
- A He worked as a waiter in a restaurant.
 - B He got an offer to lead a team.
 - C He became the chairman of the Student Union.
- 24 The man decides to
- A do it by himself.
 - B find a tutor.
 - C listen to others.
- 25 What is the man's attitude after the discussion?
- A He thinks it is useless.
 - B He is looking forward to it.
 - C He feels uncertain about it.
- 26 What should be shown in the man's reflective journal?
- A self-awareness
 - B mistakes
 - C achievements

Questions 27-30

What is the woman's attitude toward each of the following activities of study?

Choose **FOUR** answers from the box and write the correct letter, **A-E**, next to questions 27-30.

- | Attitude | |
|----------|----------------------|
| A | define a problem |
| B | independent learning |
| C | develop study skills |
| D | gain confidence |
| E | find it difficult |

- 27 writing an essay
- 28 taking exams
- 29 making class notes
- 30 taking presentation notes

Questions 31-38

Complete the notes below.

Write **ONE WORD ONLY** for each answer.

Chimpanzee Behaviours

Species

- We can find Pan or Pan Troglodytes in West and Central Africa.
- The Bonobo or Pan Paniscus are found in Democratic Republic of Congo.

Current research

- rule out 31 and biological factors
- learn through 32 of other chimps' behaviour

Discoveries

- The book *The Third Chimpanzee* by James Diamond discusses some physical features of chimpanzees.
- The discovery reported by Jane Goodall suggests that chimpanzees know how to use 33

Chimpanzees in Senegal

- use spears sharpened with their teeth
- can 34 the shell of a coconut
- use a 35 hammer to crash nuts
- are capable of learning 36 and understanding human language

Sub-species

- Bonobos live on the other side of a 37
- Both of them are reducing alarmingly in population 38

Questions 39 and 40

Choose **TWO** letters, **A-E**.

Which **TWO** topics about chimpanzees will the students discuss next week?

- A** They are slower than human in different ways.
- B** They learn things by copying humans' behaviour.
- C** They develop behaviours generation by generation.
- D** They have very strong ability of logical thinking.
- E** They could be modified to adapt to the environment.

Test 2

SECTION 1 Questions 1-10

Complete the notes below.

Write **NO MORE THAN TWO WORDS AND/OR A NUMBER** for each answer.

Birmingham Exhibition

Example

Answer

Purpose of calling:

purchasing tickets

- Open in: 1
- Length of exhibition: 2
- A wide range of manufacturers will be showcased.
- Some cars are available to observe and the others are for 3
- The 4 is prohibited to take into the museum.
- Every ticket includes one free photo.
- Price of ticket: 5 £ (in advance)
- Transfer to Mark 6 (Box Office Manager)
- Held in the 7 Palace this year
- Not far from 8
- Website: www. 9 com
- Best way to contact: 10

SECTION 2 Questions 11-20**Questions 11-15**

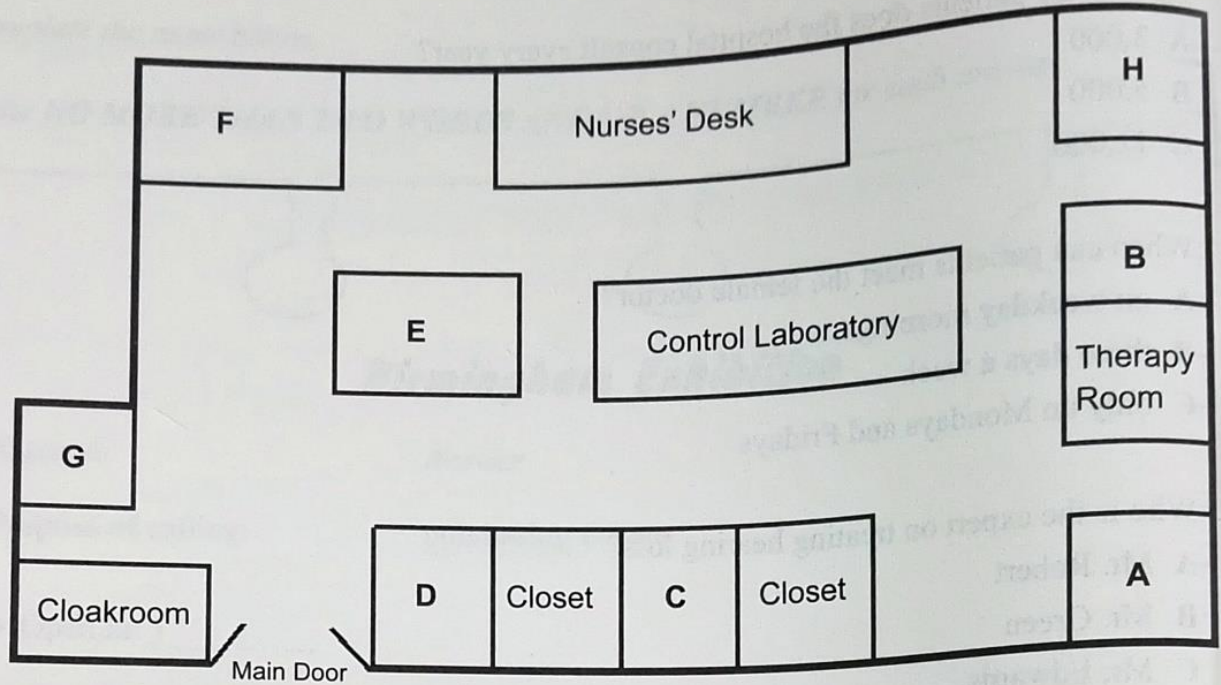
Choose the correct letter, **A**, **B** or **C**.

- 11 How many patients does the hospital consult every year?
A 3,000
B 5,000
C 11,000
- 12 When can patients meet the female doctor?
A on weekday mornings
B three days a week
C only on Mondays and Fridays
- 13 Who is the expert on treating hearing loss?
A Mr. Robert
B Mr. Green
C Mr. Edwards
- 14 Where are patients recommended to buy their medicine?
A the supermarket in the town
B pharmacies nearby the city centre
C the health care's pharmacy
- 15 What will the patients be asked about whether they are willing to do?
A Letting one student attend the consultation
B Asking postgraduate students to do treatment
C Meeting students in group discussion

Questions 16-20

Label the map below.

Write the correct letter, **A-H**, next to questions 16-20.



- 16 Reception
- 17 Mr. Green's Room
- 18 Medical Records Office
- 19 Surgery Room
- 20 Manager's Office

SECTION 3 Questions 21-30

Questions 21-25

What is the main opinion of each of the following people?

Choose **FIVE** answers from the box and write the correct letter, **A-G**, next to questions 21-25.

- | Opinions | |
|-----------------|----------------------------------|
| A | lighting restrictions |
| B | alternative lighting |
| C | reduce the number of insects |
| D | decline in the number of species |
| E | climate changes |
| F | impacts on the growth of animals |
| G | impacts on water quality |

- 21 Ken Simpson
- 22 Dave Kepler
- 23 Sharon Grey
- 24 Maria Jackson
- 25 Barbara Swallow

Questions 26 and 27

Choose the correct letter, **A**, **B** or **C**.

- 26 What does Jim think about the difference among species in natural and artificial light?
- A It makes no difference.
 - B Species will die out in natural light.
 - C Species will die out in artificial light.
- 27 One reason why Jim and Jane felt unsatisfied about the theories discussed in the lecture was that
- A governments didn't increase any spending on them.
 - B most theories had nothing to do with the exams.
 - C many theories lacked solid proof in the field.

Questions 28-30

Choose **THREE** letters, **A-G**.

Which **THREE** topics are they interested in studying in the future?

- A quality of life of tourists
- B wildlife park animals
- C migration birds
- D animals living in rural areas
- E animals living in tropical climate
- F the impacts of different environment on animals
- G pandas in the zoo

SECTION 4 Questions 31-40



Questions 31 and 32

Choose **TWO** letters, A-E.

Which **TWO** aspects did the new rules at the end of the 19th century focus on?

- A cooperation
- B competition
- C moral values
- D player's physical protection
- E business model

Questions 33-40

Complete the sentences below.

Write **ONE WORD ONLY** for each answer.

Football in the UK

- 33 At present the main reason why UK schools push football education is the pressure from
- 34 Prior to the 19th century, football players used different of rules.
- 35 People attempted to standardise the rules from the whole, known as the 'Cambridge Rules' in 1848.
- 36 Attendances were increasing due to the improvement of infrastructure and the system.
- 37 Football became popular and it is regarded as a event.
- 38 The football clubs were responsible for most of the and development for the football association.
- 39 against other teams were also organised by the football clubs.
- 40 In 1910s, football players were approved of in the game.

Test 3

SECTION 1 Questions 1-10

Complete the notes below.

Write **ONE WORD AND/OR A NUMBER** for each answer.

DRIVING SCHOOL

Example

Answer

Looking for driving lessons given during the: weekends

Address: 1 Road

Drive: the city center

2 above the city

Teacher's name: Allen 3

Popular type of car on roads: 4

Had better: practice during the 5

Safety driving depends on: good 6

Obtain: a driving 7

Final test fee: 8 \$

Duration of test: approx 9 minutes

More advice: keep a driving 10

SECTION 2 Questions 11-20

Questions 11-15

Complete the sentences below.

Write **ONE WORD AND/OR A NUMBER** for each answer.

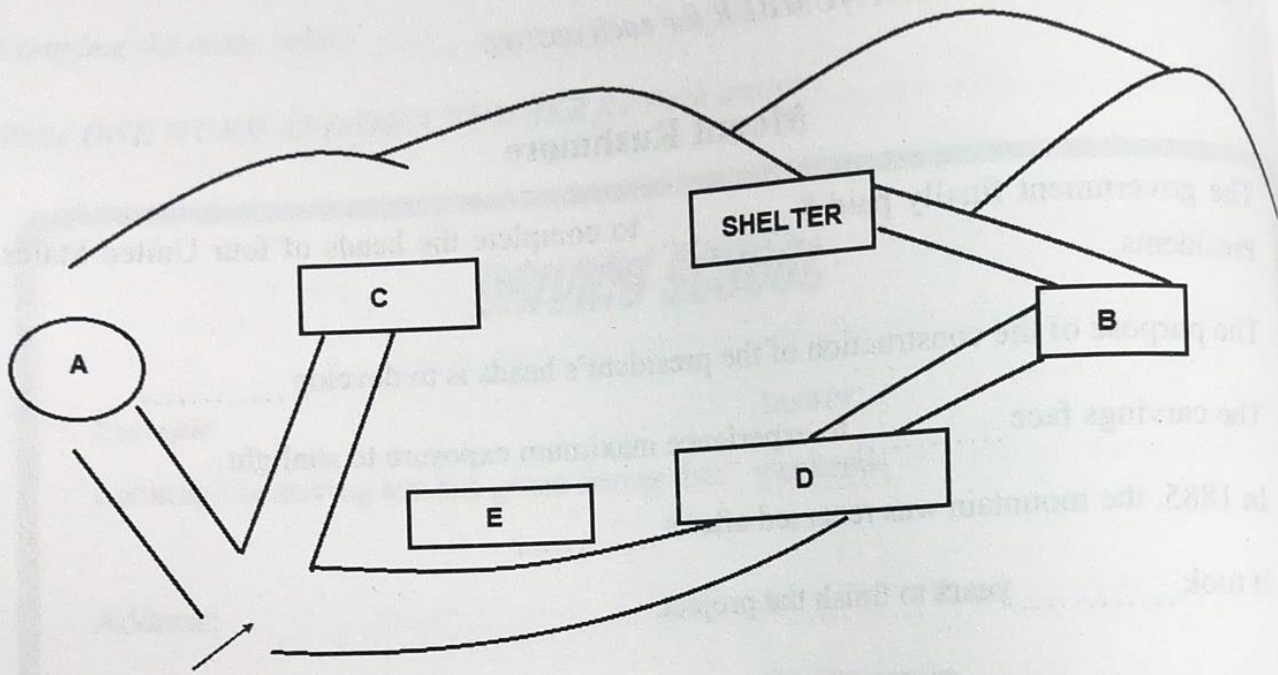
Mount Rushmore

- 11 The government finally paid \$ to complete the heads of four United States Presidents.
- 12 The purpose of the construction of the president's heads is to develop
- 13 The carvings face to experience maximum exposure to sunlight.
- 14 In 1885, the mountain was renamed after a
- 15 It took years to finish the project.

Questions 16-20

Label the map below.

Write the correct letter, A-E, next to questions 16-20.



- 16 information centre
- 17 refreshment centre
- 18 gift shop
- 19 workshop
- 20 visitor centre

SECTION 3 Questions 21-30

Questions 21-25

Choose the correct letter, A, B or C.

- 21 Why does the student want to study Tourism?
- A good future
 - B good pay
 - C parents' will
- 22 What kind of skill will the student gain in the course?
- A time-management
 - B financial planning
 - C note-taking
- 23 The student has the ability of
- A independence.
 - B communication.
 - C coping well with statistics.
- 24 The teacher believes that the industry of tourism is
- A shrinking.
 - B seeing a bright future.
 - C growing popular.
- 25 How does the student compare the university course with polytechnics?
- A There are summer schools.
 - B The course is structured in modules.
 - C The price is reasonable.

Questions 26-30

What feature do the speakers identify for each of the following courses?

Choose **FIVE** answers from the box and write the correct letters, **A-G**, next to questions 26-30.

Features	
A	limited value
B	useful
C	relevant to career
D	flexible admission
E	intensive
F	improving leadership
G	self-control and time management

Courses

- 26 Travel and Business
- 27 Japanese
- 28 Medical Care
- 29 Computer
- 30 Public Relations

SECTION 4 Questions 31-40

Complete the notes below.

Write **NO MORE THAN TWO WORDS** for each answer.

Company Outsourcing

Case study – TCP Technologies:

- Manager: Manjeet Khanna
- Main target: to create a 31 environment

Grading for staff:

- Every month grades are published on an 32
- The cultural openness increased the quantity of incoming contracted opportunities.
- The cultural openness improved the level of 33 of the company.
- The increased rate of staff satisfaction has led to growth of 32% in the 34

Recent interview:

- A company is not one entity comprised of components, but a living organism composed of cells.
- Manjeet's motto is 35

Benefits of management style:

- The rate of staff turnover has been reduced.
- A 36 can be from any other company.
- Grades are not used for 37

Features of managing style:

- Personally, the manager wrote emails to respond to the complaints.
- The complaint form known as a 38 has access to all employees online.
- The manager can receive any complaints concerning air conditioning, food quality and 39 entitlement.
- A 40 on the anonymous complaint was introduced in the new system.

Test 4

SECTION 1 Questions 1-10

Complete the notes below.

Write **NO MORE THAN TWO WORDS** for each answer.

JOB ENQUIRY

Example

• Type of job required:

Answer

part-time

Position Available	Details
1	Duty: to provide 2 service Working hours: 3 Requirement: receive 4 without pay Day off: one day a week (request in advance)
5	Requirements: clean and valid license six-year experience Working hours: 6 Duty: to take employers to and from work to collect the 7 to pick up the children Day off: 8
Cashier in a 9	Working hours: 17.30-22.30 Duty: to sell and dispense tickets to provide refreshments to take 10 Day off: Mondays

13

SECTION 2 Questions 11-20

Questions 11-14

Choose the correct letter, A, B or C.

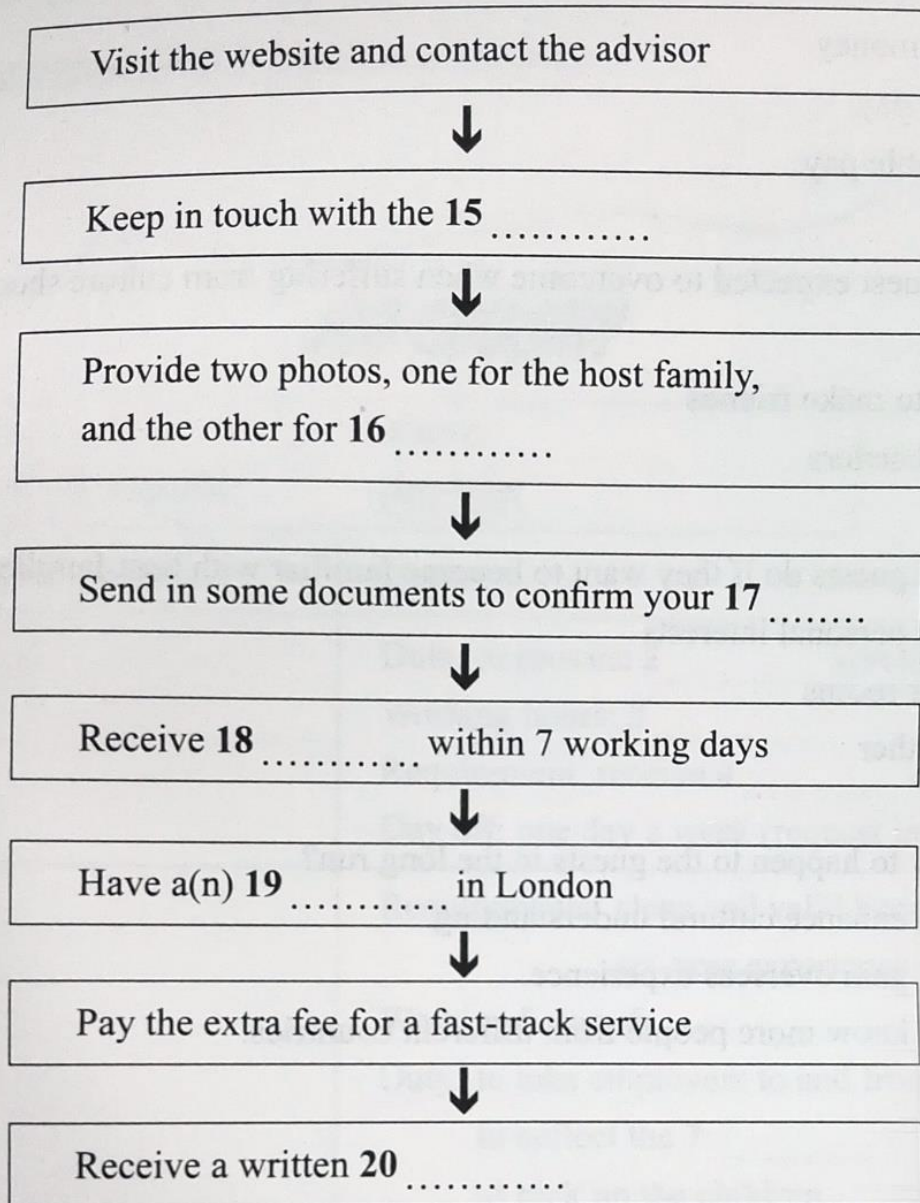
- 11 The host families will
- A earn a big money.
 - B receive no pay.
 - C receive stable pay.
- 12 What is the guest expected to overcome when suffering from culture shock?
- A loneliness
 - B difficulty to make friends
 - C language barriers
- 13 What can the guests do if they want to become familiar with host families?
- A talk about personal interests
 - B clean their rooms
 - C cook together
- 14 What's likely to happen to the guests in the long run?
- A They will enhance cultural understanding.
 - B They will gain overseas experience.
 - C They will know more people from different countries.

Questions 15-20

Complete the flow-chart below.

Write **NO MORE THAN TWO WORDS** for each answer.

HOW TO APPLY FOR A HOMESTAY



SECTION 3 Questions 21-30**Questions 21-26**

Choose the correct letter, **A**, **B** or **C**.

- 21 What kind of research method does the professor recommend?
A interview
B observation
C questionnaire
- 22 What is the project based on?
A a study they did before in Australia
B a similar angle someone has done before
C an Australian study
- 23 What does the professor advise Douglas to do about the formation of the focus groups?
A strengthen the group in size
B reduce the number of children in each group
C build more than 3 groups
- 24 To do the project best, the professor suggests the students
A interview various people or sectors.
B not be too ambitious.
C work hard enough.
- 25 To gather data, the professor asks Jane
A to replace other people's advice.
B to simplify the textbook.
C to practice using the date table.
- 26 The reason why Douglas hasn't read enough reference books is that
A he doesn't have enough time.
B he thinks there are too many books to read.
C he hasn't spent time in the library.

Questions 27-30

What do the students decide about the following parts of the project?

Write the correct letter, **A**, **B** or **C**, next to questions 27-30.

- | |
|--------------------------------|
| A Jane will do |
| B Douglas will do |
| C They will do together |

- 27 final report
- 28 sheet preparation
- 29 letter
- 30 transcript

SECTION 4 Questions 31-40

Questions 31-36

Complete the notes below.

Write **ONE WORD ONLY** for each answer.

GRAPHICAL SYMBOL

'Graphical symbol'

- includes the logographs in Egyptian hieroglyphic writing and ancient Chinese pictograms
- found in Africa, the Americas, and Oceania
- still has something to do with 31 use today

Ancient graphic writing systems

- Researchers obtain a wide range of 32 about past civilisations.
- Rosetta Stone was found in 1799 when members of Napoleon's expedition got to Egypt.
- Frenchman Jean-François Champollion determined the phonetic values of the symbols in 1822.
- In those symbols, 33 are used to depict various meanings.

Camera obscura

- 34 helps people understand history better.
- Some charities will 35 many endangered species.
- A camera was tied to one 36 of a bird.

Questions 37-40

Complete the sentences below.

Write **ONE WORD ONLY** for each answer.

- 37 More will be included in the future with the development of photography.
- 38 Companies would like to invest a lot to advertise in
- 39 Designing appealing is used as a way of effective branding.
- 40 Graphic writing systems are of great importance in the subject of

Test 5

SECTION 1 Questions 1-10

Questions 1-3

Complete the notes below.

Write **ONE WORD AND/OR A NUMBER** for each answer.

COMPLAINT TO THE AIRPORT

Example

Answer

Name:

Jack Dawson
.....

Address:

1 Road, Exeter

Postcode:

2

Telephone:

work: 3

home: 798662

Questions 4-6

Choose the correct letter, **A**, **B** or **C**.

- 4 What aspect of the flight does the man complain about?
- A punctuality
 - B legroom
 - C temperature
- 5 What does the man think about the food served during the flight?
- A It is not enough to eat.
 - B It is expensive.
 - C It has a bad taste.
- 6 What does the man think of the service of the staff?
- A satisfied
 - B long wait
 - C bad attitude

Questions 7-10

Complete the sentences below.

Write **NO MORE THAN TWO WORDS** for each answer.

- 7 The man felt satisfied with because it was quick.
- 8 During the flight, facilities helped him distract from other poor quality of the service.
- 9 As a gift, a 20% discount on the fees will be offered.
- 10 The flight company also offers the man a worth £20.

SECTION 2 Questions 11-20



Questions 11-16

What is customers' attitude towards the following services?

Write the correct letter, **A**, **B** or **C**, next to questions 11-16.

- | |
|---|
| <p>A They are very interested.</p> <p>B They might be less interested.</p> <p>C They are not interested.</p> |
|---|

- | | | |
|----|---------------------------|-------|
| 11 | a free gift | |
| 12 | a driver for an extra fee | |
| 13 | a package service | |
| 14 | updated car models | |
| 15 | a discount | |
| 16 | a new branch company | |

Questions 17-20

Choose the correct letter, **A**, **B** or **C**.

- 17 What is the problem of the public transport?
- A Traffic jams
 - B Pedestrian safety
 - C Low efficiency
- 18 According to the speaker, what is true about the transportation?
- A Buses are easy to find.
 - B Taxis are punctual.
 - C Airplanes are unaffordable.
- 19 According to the speaker, what is true about the bus?
- A Passengers occasionally spend more than half an hour waiting for it.
 - B It is sometimes overcrowded.
 - C It is often dirty.
- 20 What is the existing situation about the price of bus tickets?
- A It is fluctuating severely.
 - B It is declining.
 - C It needs to be increased.

SECTION 3 *Questions 21-30*

Questions 21-25

Choose the correct letter, A, B or C.

- 21 What was the most difficult problem when the company was founded?
- A No clear objectives
 - B No formal structures
 - C No perfect premises
- 22 What is the staff unsatisfied with?
- A The type of work
 - B The work assignment
 - C The feeling of appreciation
- 23 What was the problem of the manager?
- A He had a lot of tasks to do.
 - B He employed too many people and let them go then.
 - C He always made decisions by himself.
- 24 What does the staff think of the new manager of the company?
- A They are delighted to see that the meeting time is shorter.
 - B They feel annoyed toward him.
 - C They are amazed that he has done it well.
- 25 What achievement has the organisation made already?
- A Children were involved in painting the entrance area.
 - B There was no particular achievement.
 - C It built a local primary school.

Questions 26-30

Complete the summary below.

Write **NO MORE THAN THREE WORDS** for each answer.

Major Problems of a Company

Since the company opened, there have been many problems with employment, but there is no **26** He needs to find a venue for financial training. It is very hard to run an organisation and the **27** is of great importance to staying organised. To enhance the organisation skills, there is a section on **28** in the library where some valuable books can be found. In addition, the library contains some useful resources, such as a collection of documentaries on personal organisation, the literature on **29**, and the articles on the **30**

SECTION 4 Questions 31-40



Complete the notes below.

Write **NO MORE THAN TWO WORDS** for each answer.

CLIMATE AND ARCHITECTURE

- Cases and examples are from practice conducted in 31 as well as rural areas.

Acid rain

- The chemicals have devastating effects on the architecture.
- The government try to reduce the negative effects.
- Funds have been received from a 32
- 33 experience lower levels of acid in damaging pollutants.
- In recent years, Alter Project focuses on the buildings made of 34

Pollution

- One of the main sources of pollution is from the construction industry.
- 35 is used to reduce pollution in Sky Tower.
- Construction is affected by the increased 36 in winter.
- Humidity affects the 37 buildings whose grain can be condensed by moisture from the air.

Building & Technology

- Ground conditions can be a problem when the density of the 38 is wrong.
- Architects can now monitor the 39 of buildings.
- The government should make 40 for the architects.

Test 6

SECTION 1 Questions 1-10

Complete the notes below.

Write **NO MORE THAN TWO WORDS AND/OR A NUMBER** for each answer.

HOUSE RENTAL

Example

Answer

• Name:

Mary Collins

• Facility available:

1

• General layout:

upstairs: living room

bedrooms

downstairs: 2

• Car park:

availability of a large 3

• Shopping:

at the 4

• Place for children playing:

5

• Education resources:

a 6 in the community

• Rent:

\$980 a month

(including the maintenance fees of the 7)

• Date of house available:

8

• Viewing arrangement (time):

meet at 9

• Postcode:

GA58ER

• Address:

8 10

SECTION 2 Questions 11-20

Questions 11-15

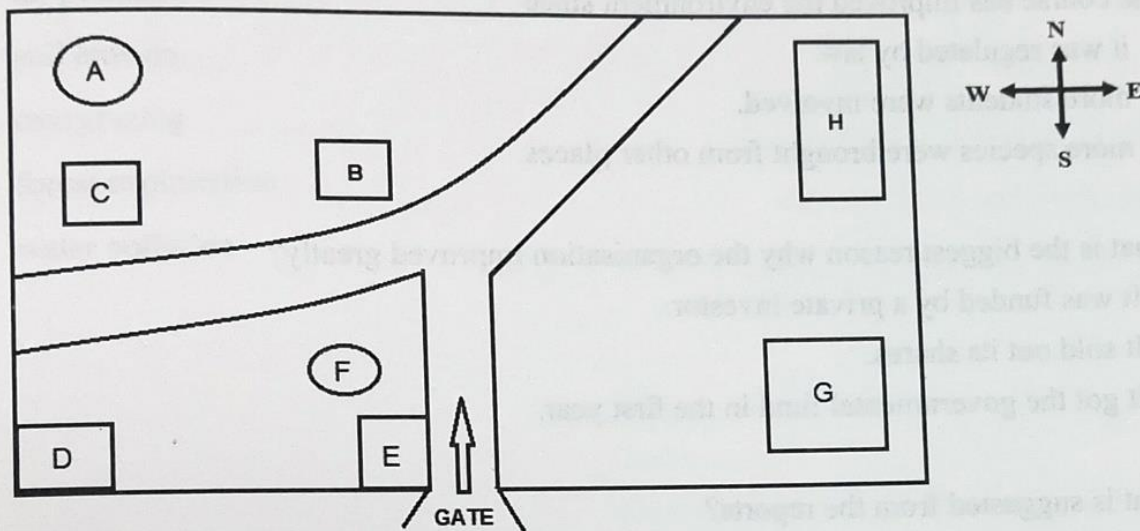
Choose the correct letter, **A**, **B** or **C**.

- 11 What's the new improvement about the zoo this time?
- A The zoo has built a new dog-walking area.
 - B The zoo has brought a new batch of animals.
 - C The zoo has expanded its exhibition area.
- 12 What is the change for the new regulation enacted in June?
- A The zoo is not open during the weekdays.
 - B Visitors are allowed to feed the animals at night.
 - C Visitors are allowed to see the animals until the late night.
- 13 While visiting the kangaroo, which behaviour is forbidden?
- A Photo-taking
 - B Shouting
 - C Feeding
- 14 Why is the pye-dog zone temporarily closed?
- A Because the fence is broken.
 - B Because the pye-dogs are in hibernation.
 - C Because the pye-dog zone is under construction.
- 15 Where can the visitors buy the discounted ticket?
- A Gift shop
 - B Photo shop
 - C Reception desk

Questions 16-20

Label the map below.

Write the correct letter, **A-H**, next to questions 16-20.



- 16 Bird hide
- 17 Pye-dog zone
- 18 Rest area
- 19 Kangaroo visiting site
- 20 Photo shop

SECTION 3 Questions 21-30

Questions 21-24

Choose the correct letter, **A**, **B** or **C**.

- 21 The course has improved the environment since
- A it was regulated by law.
 - B more students were involved.
 - C more species were brought from other places.
- 22 What is the biggest reason why the organisation improved greatly?
- A It was funded by a private investor.
 - B It sold out its shares.
 - C It got the governmental fund in the first year.
- 23 What is suggested from the reports?
- A Resources still need management.
 - B Teachers and the students have benefitted from the field trips.
 - C The environment has been terribly damaged.
- 24 Who did obtain the special experience from the field trip carried out by the organisation?
- A students
 - B teachers
 - C researchers

Questions 25 and 26

Choose **TWO** letters, **A-E**.

What **TWO** problems does the report focus on?

- A air pollution
- B soil erosion
- C overgrazing
- D forest exploitation
- E water pollution

Questions 27 and 28

Choose **TWO** letters, A-E.

Which **TWO** benefits of this activity to the students are mentioned by the professor?

- A They become more punctual.
- B They feel more confident.
- C They get practical experience.
- D They learn how to collect data.
- E They know the importance of environment protection.

Questions 29 and 30

Choose **TWO** letters, A-E.

What **TWO** things will the woman do in the rest of the time when no activities are going on?

- A read more reference books
- B study in library
- C interview some teachers
- D participate in one of fun hobbies
- E join in some tutorials

SECTION 4 Questions 31-40



Complete the notes below.

Write **NO MORE THAN TWO WORDS** for each answer.

ROBERTS COMPANY

Founding

- The most important principal of the company is to improve the 31 development of camera technology.

Aim

- It was founded by Dwayne Roberts in 1957 and mainly explore 32

Potential applications

- recording high-definition video
- discovering 33
- searching plants in the rainforest to experiment 34
- distributing more across the road network to control 35

At present

- 36 are the best sellers in the company.
- They are designed to look like 37
- The company is working on a tiny 38 to change the way people see photography.

Other applications

- Surgeries could be faster and more 39

Internship opportunity

- To get it, the students can participate in the 40 organised by the company every year.

SECTION 1

Reception: Good afternoon, you're through to reception at The Island Hotel in Crete, how may I help you today?

Mr. Schiffer: Yes, hello there, I'm hoping to book a double room for my wife and myself for about two weeks from the 25th April of this year. Firstly, could you tell me whether it's particularly hot during this time?

Example

Reception: Yes, of course Sir, during late April and early May, the daytime temperature shouldn't exceed 19 degrees Celsius, but the weather has been rather erratic and difficult to predict in recent years, so I am unable to say for certain.

Q1

Mr. Schiffer: Okay, that sounds good, my wife doesn't like going outside when it's very hot! I haven't booked flights yet, but I must say that I'm unfamiliar with Crete and its transport system. Does the hotel provide an airport shuttle service?

Reception: Yes Sir, we provide a complementary airport pick-up service for all our guests. It takes about 40 minutes to get here from the airport, but it's at least 60 minutes at rush hours and you will be provided with a fully air-conditioned shuttle bus.

Q2

Mr. Schiffer: Okay, excellent. In that case, do you have any rooms available for the dates I gave you?

Reception: I shall have a look on the system now for you Sir, bear with me just a moment. [brief pause] Yes Sir, I can see now that we have several rooms available. Would you prefer a garden view or a sea view?

Mr. Schiffer: Well, ideally I would like a sea-view room with a balcony, but of course that depends on the difference in price.

Reception: Not to worry Sir, all of our standard double rooms have en-suite facilities and a balcony. If you would like one of our sea-view rooms, there is a premium of €60 per night.

Q3

Mr. Schiffer: Okay, so could you tell me the total nightly rate for a standard

double room with a sea view?

Reception: Yes, of course Sir, for the spring months, our rate is €216 per night. For 14 nights, altogether this will come to €3,024.

Mr. Schiffer: Perfect. I also read on your website that the hotel has gym and spa facilities. Are there any other facilities on offer?

Reception: Yes, we have a large outdoor infinity pool overlooking the ocean, with luxury sun beds and a poolside bar. We also have 3 full-sized tennis courts, where we run a popular doubles tournament, with the winner receiving 2 all-inclusive spa day vouchers. Q4

Mr. Schiffer: Goodness, I shall have to brush up on my tennis skills!

Mr. Schiffer: Are there any other activities organised by the hotel that we can partake in? It's just that it's our wedding anniversary on the 30th of June, and I would like to provide my wife with the perfect romantic getaway.

Reception: I can assure you, Sir, that your wife won't be disappointed. Ours is a 5-star resort which is renowned for its luxury and beauty. In terms of activities, the hotel provides thrice weekly entertainment. On Tuesdays, guests will take a mini bus and partake in learning to cook succulent fish dishes with our Michelin starred chef, Enrique. The class will take place in a beautiful valley deep in the Cretan hills, where guests will be treated to an intimate piano performance by our in-house concert pianist, Pedro. On Wednesdays, a select number of guests will be fortunate enough to explore the mountains by helicopter, before being transported to a tropical Cretan garden by shuttle bus. Finally, on Thursdays after a fancy dinner, we provide a spectacular fireworks display, which guests can view from the comfort of a cable car. Q5 Q6 Q7 Q8 Q9 Q10

Mr. Schiffer: Oh wow, that all sounds absolutely wonderful! I shall book the room now, and then I need to look at flights so as not to become extortionate. Would you like to take my details now or later? [fade out]

Question 1 19

听前预测：定位词为 daytime，提示词为 up to, °C，此处应填数字（温度）。
题目解析：本题定位至“the daytime temperature shouldn't exceed 19 degrees Celsius（日间温度不会超过 19°C）”，故此空填数字 19。

Question 2 40/forty minutes

听前预测：定位词为 transferring, airport，此处应填数字（时间长度）。
题目解析：定位原文“It takes about 40 minutes to get here from the airport...”，“it takes (sb.) some time to do sth.”意为“做某事花费（某人）多少时间”，据此答案应为 40/forty minutes。

Question 3 balcony

听前预测：定位词为 en-suite facilities，提示词为 and，此处应填名词（单数）。
题目解析：本题很好定位，直接定位至“en-suite facilities and a balcony”处，即可得答案 balcony。

Question 4 tennis courts

听前预测：定位词为 three standard，此处应填名词。
题目解析：本题题干中的 three standard 同义替换了原文中的 3 full-sized，根据原文“We also have 3 full-sized tennis courts...”得出答案 tennis courts。

Question 5 fish dishes

听前预测：定位词为 Tuesdays，此处应填名词。
题目解析：根据定位词 Tuesday 定位至“On Tuesdays, guests will take a mini bus and partake in learning to cook succulent fish dishes...”，题干中的 make 在原文中的同义替换词为 cook，则后面的内容即为答案，但题目要求答案不得超过两个单词，故此处填 fish dishes。

Question 6 piano

听前预测：定位词为 mini bus，此处应填形容词或名词。
题目解析：含有 mini bus 的一句并未提供与本题相关的信息，而接下来一句的后半部分“... where guests will be treated to an intimate piano performance by our in-house concert pianist...”是解答此题的关键，故本题填 piano。

Question 7 helicopter

听前预测：定位词为 Wednesdays，此处应填名词。
题目解析：本题定位至“On Wednesdays, a select number of guests will be fortunate enough to explore the mountains by helicopter...”，其中的 explore the mountains 正好对应了题干中的 mountain view，故本题答案为 helicopter。

Question 8 (Cretan) garden

听前预测：定位词为 shuttle bus, tropical, 此处应填名词。

题目解析：此题根据 "...before being transported to a tropical Cretan garden by shuttle bus" 作

故答案为 (Cretan) garden。

Question 9 fireworks

听前预测：定位词为 spectacular display, 此处应填名词。

题目解析：定位至 "Finally, on Thursdays after a fancy dinner, we provide a spectacular fireworks display, which guests can view from the comfort of a cable car." 题干将原文中的 a spectacular

fireworks display 换了一个表达形式，即将 display 前置，of 后的词用以修饰 display，对应一下即可得答案 fireworks。

Question 10 cable car

听前预测：定位词同上，此处应填名词（交通工具）。

题目解析：依然根据上一题定位的句子作答，答案在后半句 "which guests can view from comfort of a cable car"，因此，Transportation 一栏处应该填 cable car。

SECTION 2

BarterOnlineUK is a young, up and coming website in the United Kingdom where users can 'buy' new and used goods; however, instead of paying with money, registered users instead exchange their purchase for an item of similar value. This part is perhaps the most complicated, as the registered users themselves must mutually decide on an appropriate value, with value either being the recommended retail price (RRP), or simply how much they believe the item to be worth. The website has been founded by a group of four friends in the north of England. Originally they exchanged their belongings among family members. They frequently found themselves swapping their belongings when they no longer had any use for them. They live by the motto 'one person's trash is another person's treasure', and hate to throw things away. As more and more people caught wind of the idea and wanted to participate in the exchanges, the group decided that the idea had the potential to become a successful business venture, and so it did.

Q11

BarterOnlineUK is a start-up online business, which took 3 months to set up and has now been running for around half a year. Despite only being founded a short time ago, the website has already garnered about 1,500 registered users, with 500 more than expected, a huge achievement for the founders. Some of the users are registered in the United Kingdom and Canada, with the majority from the Republic of Ireland. In order to become a registered member, users must first fill in their personal details followed by their credit or debit card details, which will be used to take payment of a monthly fee of £5. As long as this fee is paid, users will be able to perform an unlimited number of online exchanges.

Q12

Q13

Q14

A multitude of items are sold on the website, such as textbooks, soft toys, and tools, however books for children and computer games are by far selected most. The exchange process itself is not as complicated as it might seem, users can enter their preferences for what they would like to receive, and also explicitly state what they would like to give away, and the website will automatically pair up suitable users. If, however, a user doesn't want to give anything away, but would simply like to buy something, BarterOnlineUK does support a secure online payment system where users can perform a normal monetary transaction. Despite this, the founding group strongly discourages the use of the online payment system, clearly stating that this goes against the intended ethos of the company.

Q15&

Q16

Although bartering is an age-old process, many of the website's users are unsure how to decide which of their own items to exchange. It often helps to order items by popularity using the 'filter' button provided, this will tell the website to find out popular items for users' convenience. To this, the founding members say just put everything you don't want on there, different people have different tastes, and you never know what they might be looking for! In order to aid registered users in their exchanges, and to provide them with assurance, the founders recently added a new feature whereby on completion of an exchange, users will be encouraged to provide each other with feedback. This feedback will include criteria such as the quality of the item as compared with how it was advertised, the ease of communication with the seller, the speed at which the item was delivered, and so on. The friends believe that using this method, users will have a more transparent

Q17

Q18

Q19

Q20

and trustworthy bartering experience. [fade out]

SECTION 2 解析

Question 11 B

听前预测：定位词为 website, organised。

题目解析：本题考点句为 “The website has been founded by a group of four friends in the north of England”，故选 B。

Question 12 C

听前预测：定位词为 operated。

题目解析：根据 “BarterOnlineUK...has now been running for around half a year” 作答，这里的 running 意为 “经营”，是题干中 operated 的同义替换词，故本题选 C。

Question 13 B

听前预测：定位词为 registered users。

题目解析：根据定位词定位至 “...the website has already garnered about 1,500 registered users”，这里的 garnered 意为 “获得”，因此网站已有 1500 名注册用户，故选 B。

Question 14 A

听前预测：定位词为 most users。

题目解析：定位至 “Some of the users are registered in the United Kingdom and Canada, with the majority from the Republic of Ireland”，majority 在题干中同义替换成了 the most，本题答案为 A。

Questions 15-16 A & C (IN EITHER ORDER)

听前预测：定位词为 most popular。

题目解析：本题需要理解出题句 “A multitude of items are sold on the website, such as textbooks, soft toys, and tools, however books for children and computer games are by far selected most. (网站上出售的物品种类众多，如教材、毛绒玩具、工具等，但目前选购儿童读物和电脑游戏的最多)”，故最受欢迎的是 books for children 和 computer games，对应选项 A 和 C。

Question 17 popular

听前预测：定位词为 sort out，此处应填形容词或名词。

题目解析：本题定位词 sort out 是原文中 find out 的同义替换，原文为 “...this will tell the website to find out popular items for users' convenience”，故填 popular。

Question 18 taste

听前预测：定位词为 because，此处应填名词。

题目解析：根据 "...different people have different tastes..."，可得此处填 taste。

Question 19 feedback

听前预测：定位词为 completion of exchanges，此处应填名词。

题目解析：定位至 "...the founders recently added a new feature whereby on completion of an exchange, users will be encouraged to provide each other with feedback..."，其中 provide 同义替换了题干中的 give 一词，句中的核心名词 feedback 即为答案。

Question 20 speed

听前预测：定位词为 ease of communication，此处应填名词。

题目解析：听完 ease of communication 后，接下来的 "the speed at which the item was delivered..." 为本题考点句，故答案为 speed。

SECTION 3

Tom: Professor Tomlinson, may Annie and I please quickly ask you a few questions about the reflective journal assignment? It's just that we're a bit confused as to what you want us to include and discuss.

Prof. Tomlinson: Yes of course, what are you having trouble with?

Annie: Well, everything really. To start with, what should be included first in the reflective journal? Perhaps suggestions from others?

Prof. Tomlinson: No no, firstly you should include the study goals you set yourself at the beginning of the module. This section should have been discussed in some detail towards the beginning of the course by Professor May. You should be able to find her suggestions on the slides she has provided the class online. Q21

Annie: Okay, thank you, Professor. Could I also trouble you to take a brief look at my bibliography and footnotes? I feel like they're missing something; most of our friends' bibliographies are longer.

Prof. Tomlinson: Well, looking at this Annie, I can see that you have used a wide range of resources, which shows that you have made effective use of communication technology. As far as I can tell, you need not make any changes to this, although you might want to double check that your referencing complies with the Harvard Referencing Style regulations. Q22

Annie: Oh I'm very surprised you've said that! Thank you, now I can set my mind at ease. Tom, you said you wanted to ask the Professor about the achievements section?

Tom: Ah yes, Professor, in the assignment guidelines, we are asked to introduce and elaborate on our biggest achievement in the past, saying which skills we learnt in the process, and how these skills can be transferred to various different future careers. The only problem is that I don't know what my greatest achievement actually is. I've only ever worked as a waiter in a hotel restaurant during the summer holidays from university.

Prof. Tomlinson: If you worked as a waiter in a hotel restaurant, you're bound to have worked with other waiters as part of a team. Would you say that during your time as a waiter, you developed any leadership skills?

Tom: Yes, well I suppose I was asked to become the team leader of the food and beverage department. But that's hardly an achievement. Q23

Prof. Tomlinson: You might not think so, but if you write that you were offered the position of the team leader, it shows a lot more about your character, for example that you're charismatic and work well in a high-pressure situation.

Tom: I never would have thought to write that down, thank you! I guess I should start listening to others more often! Annie, do you have any more questions or are you ready to go back to the library? Q24

Annie: Yeah, I think I've got everything I need. Thank you very much, Professor Tomlinson!

[Tom and Annie alone]

Tom: That was really helpful. I'm actually starting to look forward to writing this now, and it should be a really useful exercise to Q25

prepare us for writing CVs and applying for jobs. It's shocking how bad I am at identifying my strengths and weaknesses. Professor Tomlinson has shown me that I definitely need to start displaying some self-awareness!

Q26

Annie:

Yeah, Tom, you really do. You're always so modest! Modesty is great until it comes to applying for jobs!

Annie:

Oh no! I forgot to ask the professor about the section on identifying the skills gained through different activities, do you remember? When it asks you, for example, whether writing an essay develops your study skills or your independent learning and so on?

Tom:

Oh goodness, we really should have asked him that. I've been having trouble with it too. It just seems like such a pointless task. What do you reckon the answers are?

Annie:

Hmm...I think writing an essay might be a way of identifying and resolving a problem, because you have to state the problem in the introduction and then solve it. I'm not so sure about taking exams...I thought they were supposed to develop lots of different skill sets. If I really had to choose, I'd say that taking exams enables you to become more confident in yourself... do you agree?

Q27

Tom:

Maybe, I really don't know either. What do you think about the last two? Making class notes and presentation notes?

Annie:

Oh it's so difficult! I think making class notes has to be a way of becoming a more independent learner because you yourself decide what the important information is and learn it. That reminds me, I find taking presentation notes is a disaster! The professors speak much too quickly, and I write much too slowly. [fade out]

Q29

Q30

SECTION 3 解析

Question 21 B

听前预测：定位词为 firstly。

题目解析：本题三个选项的核心词分别为：A. topics, B. study aims, C. suggestions, 定位至出题句 "...firstly you should include the study goals you set yourself at the beginning of the module...". study goals 在选项中被同义替换成了 study aims, 故本题选 B。

Question 22 C

听前预测：定位词为 got。

题目解析：本题出题句为 "I can see that you have used a wide range of resources, which shows that you have made effective use of communication technology. (我看出你使用了各种资源, 这也显示出你充分地利用了通信技术)", 故 C 为答案。

Question 23 B

听前预测：定位词为 biggest achievement, in the past。

题目解析：根据 "Yes, well I suppose I was asked to become the team leader of the food and beverage department. (我曾被委任为食品饮料部的组长)", team leader 在选项中被同义替换成了 lead a team, 故本题选 B。

Question 24 C

听前预测：定位词为 decides。

题目解析：本题出题句为 "I guess I should start listening to others more often! (我想我该多听听其他人的想法)", 故本题选 C。

Question 25 B

听前预测：定位词为 after the discussion。

题目解析：根据 "I'm actually starting to look forward to writing this now" 可看出 man's attitude, 故本题选 B。

Question 26 A

听前预测：定位词为 shown。

题目解析：定位至 "Professor Tomlinson has shown me that I definitely need to start displaying some self-awareness!" 这里 displaying 一词是 shown 的同义替换, 故本题选 A。

Question 27 A

听前预测：定位词为 essay。

题目解析：定位至 "I think writing an essay might be a way of identifying and resolving a problem, because you have to state the problem in the introduction and then solve it. (我认为写论文是发现问题和解决问题的一个方法, 因为需要在介绍中阐明问题, 之后解决问题。)", 故 writing an essay 对应 A。

Question 28 D

听前预测：定位词为 exams。

题目解析：定位至 “I'd say that taking exams enables you to become more confident in yourself...”, become more confident 也就是 gain confidence, 对应 D。

Question 29 B

听前预测：定位词为 class notes。

题目解析：定位至 “I think making class notes has to be a way of becoming a more independent learner”, 因此 making class notes 对应 B。

Question 30 E

听前预测：定位词为 presentation notes。

题目解析：定位至 “I find taking presentation notes is a disaster!” 女生认为记展示类笔记是一场灾难，言外之意就是觉得很难，因此对应 E 选项。

SECTION 4

Welcome back to my series of short lectures on apes. Today we will examine recent and historical breakthroughs on the behaviour of chimpanzees, otherwise known as chimps.

The word ‘chimpanzee’ is an umbrella term for two different species of apes in the genus Pan, which are the Common Chimpanzee, or Pan Troglodytes, found in West and Central Africa, and the Bonobo, or Pan Paniscus, which are found in the forests of the Democratic Republic of the Congo. Chimpanzees belong to the Hominidae family, together with gorillas, orangutans and indeed humans. Current research tells us that the chimps broke away from the human branch of the Hominidae family approximately six million years ago, and remain the closest living relative to humans to this day. More modern researches into chimpanzees have centred on their behavioural characteristics, once all biological and genetic factors have been ruled out. In this way, scientists have unearthed an unfathomable amount of similarities between human and chimpanzee behaviour. Although much of this research has taken place through observation of captive chimps, the results are widely seen as an authoritative reflection of chimps living in the wild. Chimps live in large so-called communities comprised of many male and female members, with the social hierarchy determined by an individual chimp's position and influence. Through such research, scientists have found that chimps learn and adapt through

Q31

Q32
observation of others' behaviour. Once in power, the alpha male is often seen to alter its body language in order to retain power, for example he might puff himself up in order to intimidate others, while lower-ranking chimps are noted to behave more submissively and holding out their hands while grunting. Female chimpanzees also have a distinct social hierarchy, with high social standing inherited by children. It is not unheard of for dominant females within a community to unite and overthrow the alpha male, backing another in his place.



James Diamond, in his book *The Third Chimpanzee* suggests that chimps should now be reclassified in the genus *Homo*, instead of *Pan*, and there are many arguments still in favour of this. Male common chimpanzees are on average 1.7 metres in height, weighing 70kg, with their female counterparts being somewhat smaller. By comparison, the Bonobo is slightly shorter and lighter, but with longer arms and legs; however, both species walk on all fours, and climb trees with great ease. Jane Goodall made a groundbreaking discovery in 1960, when she observed the use of tools among chimpanzees, including digging for termites with large sticks. A recent study claimed to reveal that common chimpanzees in Senegal have been using spears sharpened with their teeth to hunt; however these reports remain unsubstantiated. Researchers have witnessed such tools, namely rocks, being used by chimps to open coconut shells and indeed crushing nuts with stone hammers. As scientific technology has developed, so too has our knowledge of the sheer extent of the chimp's intelligence. Research has now shown that chimps have the capability to learn and use symbols, and understand aspects of the human language, including syntax as well as numerical sequences.

Q33
Q34
Q35
Q36

As I mentioned earlier, the umbrella term 'chimpanzee' is comprised of the common chimpanzee and the bonobo. These two sub-species are divided along the Congo River, with the common chimps living on one side, and the bonobos living on the opposite side of the river. Over the past few decades, both of these sub-species have witnessed an alarming decrease in population density, with animal activists now working harder than ever to protect those remaining and encourage procreation.

Q37
Q38

In addition, next week's episode will focus more closely on how chimpanzees in captivity are able to learn things through imitating the behaviour of humans, as well as how chimpanzees' behaviours have developed over many generations.

Q39
Q40

Thank you very much for attending this evening's lecture. I hope you found it intellectually stimulating, and I look forward to seeing you again next week.
Goodnight!

SECTION 4 解析

Question 31 genetic

听前预测：定位词为 Current research，此处应填名词或形容词。

题目解析：本题的定位词 Current research 同义替换为 modern researches，原文为“More modern researches into chimpanzees have centred on their behavioural characteristics, once all biological and genetic factors have been ruled out.”后半句是作答的关键，修饰 factor 的两个形容词在题干中换了位置，biological 已给出，故填 genetic。

Question 32 observation

听前预测：定位词为 learn through，此处应填名词。

题目解析：本题较容易，原文跟题目表达基本一致，定位至“Through such research, scientists have found that chimps learn and adapt through observation of others' behaviour”，故填 observation。

Question 33 tools

听前预测：定位词为 Jane Goodall, chimpanzees，此处应填名词。

题目解析：定位至“Jane Goodall made a groundbreaking discovery in 1960, when she observed the use of tools among chimpanzees... (1960年, Jane Goodall 有了突破性的发现, 她观察到黑猩猩会使用工具……)”，故本题填 tools。

Question 34 open

听前预测：定位词为 spears, teeth，提示词为 can，此处应填动词。

题目解析：本题出题句为“Researchers have witnessed such tools, namely rocks, being used by chimps to open coconut shells and indeed crushing nuts with stone hammers.”黑猩猩会使用工具 open coconut shells (打开椰壳)，本题所需的动词为 open。

Question 35 stone

听前预测：定位词为 hammer，提示词为 a，此处应填形容词或名词。

题目解析：本题考点句同上题，题干中 hammer 前留空，根据“indeed crushing nuts with stone hammers”可知要填 stone。

Question 36 symbols

听前预测：定位词为 are capable，此处应填名词。

题目解析：考点句为“Research has now shown that chimps have the capability to learn and use symbols... (研究表明黑猩猩具有学习和使用符号的能力)”，题干中的 are capable of (有……能力的) 进行了同义替换，此处填名词 symbols。

Question 37 river

听前预测：定位词为 Bonobos，提示词为 a，此处应填名词（单数）。

题目解析：定位至“*These two sub-species are divided along the Congo River, with the common chimps living on one side, and the bonobos living on the opposite side of the river.* (这两个亚种沿刚果河划分，普通黑猩猩住在河的一边，倭黑猩猩住在河的另一边)”，故本题空处需填 river。

Question 38 density

听前预测：定位词为 reducing alarmingly，此处应填名词。

题目解析：出题句为“*...both of these sub-species have witnessed an alarming decrease in population density...*”，这里 alarming decrease 是 reducing alarmingly 的同义替换，本题答案为 density。

Questions 39-40 B & C (IN EITHER ORDER)

听前预测：定位词为 topics，next week。

题目解析：定位至“*...next week's episode will focus more closely on how chimpanzees in captivity are able to learn things through imitating the behaviour of humans, as well as how chimpanzees' behaviours have developed over many generations.*”要讲两点：learn things through imitating the behaviour of humans (通过模仿人类来学习)；chimpanzees' behaviours have developed over many generations (黑猩猩的行为一代代发展)，对应选项 B 和 C。

SECTION 1

Events Coordinator: Good morning, you're through to the events coordinator at the Birmingham City Council, how may I help you?

Julie: Hello there, my husband and I are interested in purchasing tickets to the automobile exhibition, but I couldn't find many details about it on your website, and I was wondering whether you could provide me with some more information. Does it open in June? *Example*

Events Coordinator: Yes, of course, Madam. The exhibition will take place during July, and will showcase the history of automobiles from the very first commercial car in the late 1800s all the way through to the present day. *Q1*

Julie: Is the exhibition open for the duration of July?

Events Coordinator: No, Madam, the exhibition will last 3 days, from the 1st of July to the 3rd of July, and then the cars will be taken to another exhibition. *Q2*

Julie: Okay. Does the exhibition focus on a certain manufacturer?

Events Coordinator: No, it will showcase a wide range of manufacturers.

Julie: Wonderful! I'm ever so fed up of going to these shows and only seeing one manufacturer. Are there any opportunities to sit in or even drive the cars?

Events Coordinator: There will be many opportunities for you to sit in the cars; however, some of the cars will only be available to observe. We are yet to be told whether any of the antique cars will be available to drive, however there will certainly be an opportunity to test driving some of the more modern cars on a purpose-built track. *Q3*

Julie: That sounds like great fun! I mustn't forget to bring my camera, or my husband will never forgive me!

Events Coordinator: I'm afraid to say that cameras are actually strictly not allowed to bring into the exhibition. There will however be a section where a professional photographer will be available to take photos of you sitting in a car in period clothing. *Q4*

Julie:

Well, that sounds like it could be fun, but I assume the photos won't be free.

Events Coordinator: On the contrary, one free photograph is included within every ticket, but each photo after this will cost £5.

Julie:

That's a nice surprise, not many things are free anymore. I've been asking around about the ticket prices, but I haven't yet had a definite answer. Is it correct that the tickets are £100 whether you buy them now or on arrival?

Events Coordinator: I'm afraid not. If you buy the ticket in advance the price is £110, but it's £165 on the door. Q5

Julie:

Oh goodness! I suppose I'd best pay for them now then. Is it possible to buy tickets from you now over the phone?

Events Coordinator: Yes, of course, Madam. I'll transfer you to the Box Office Manager, Mark Edgeworth, that's E-D-G-E-W-O-R-T-H, and he will probably need to take your credit card details and some personal details. Q6

Julie:

Yes, that's fine. Before you transfer me, I just need to ask a few more questions. Will the exhibition be held in the Birmingham Exhibition Centre? I think that's where I went last time.

Events Coordinator: No, Madam, the Birmingham Exhibition Centre is currently undergoing some renovations, so this year all exhibitions will be held in the Summer Palace. Q7

Julie:

Summer Palace? I'm not entirely sure where that is.

Events Coordinator: Well, it's not too far from city centre. Once you're in the centre, you should be able to find signs for the palace. If not, most people in Birmingham will be able to direct you. Q8

Julie:

Hmm...neither my husband nor I am particularly good with directions. Is there anywhere I can find this information on the Internet?

Events Coordinator: Our website will give you an address. Perhaps you could visit www.directions.com for more detailed information, and they should be able to provide you with step-by-step instructions. Q9

Julie:

Okay and is this the best way to contact you, by phone?

Events Coordinator: I think the most convenient way to contact us is enquiring Q10
online, which is much simpler than having to dial various
different numbers to reach the right person! Unless you
have any more questions, I'll transfer you now.

Julie:

No, that's great! Thank you for your help.

SECTION 1 解析

Question 1 July

听前预测：定位词为 Open，提示词为 in，此处应填月份。

题目解析：根据“The exhibition will take place during July”作答，“take place”意为“举行”，展览在7月份举行，故此处填 July。

Question 2 3/three days

听前预测：定位词为 Length，此处应填数字（天）。

题目解析：定位至“...the exhibition will last 3 days（展览将持续三天）”，因此，此处填 3/three days。

Question 3 test driving

听前预测：定位词为 cars，此处应填名词或动名词。

题目解析：根据“...We are yet to be told whether any of the antique cars will be available to drive, however there will certainly be an opportunity to test driving some of the more modern cars on a purpose-built track”作答。antique cars（古董车）不知道是否可以开，但有机会试驾 more modern cars，对应到题干就是有些车只能 observe，另一些可以 test driving。

Question 4 camera

听前预测：定位词为 prohibited to take，此处应填名词。

题目解析：根据“I'm afraid to say that cameras are actually strictly not allowed to bring into the exhibition.（恐怕照相机严禁带入展会）”，not allowed to bring 同义替换了 prohibited to take，都表示不能携带，故此处填 camera。

Question 5 110

听前预测：定位词为 Price, in advance，此处应填数字。

题目解析：出题句为“If you buy the ticket in advance the price is £110...”，故正确答案为 110，注意前后出现的 £100、£165 均为干扰内容。

Question 6 Edgeworth

听前预测：定位词为 Mark，提示词为 Box Office Manager，此处应填人名中的姓氏。

题目解析：此题比较简单，根据 “I'll transfer you to the Box Office Manager, Mark Edgeworth...” 作答，跟上录音进行拼写即可，注意首字母要大写。

Question 7 Summer

听前预测：定位词为 held，此处应填名词或形容词。

题目解析：定位至 “...so this year all exhibitions will be held in the Summer Palace.” 其中 the Summer Palace 属于专有名词，注意首字母大写的问题，故此处填 Summer。

Question 8 city centre/center

听前预测：定位词为 Not far，此处应填名词。

题目解析：本题简单，基本是原句重现，原文为 “it's not too far from city centre”，很容易得到答案为 city centre/center。

Question 9 directions

听前预测：定位词为 Website，此处应填网址名称。

题目解析：本题简单，直接定位至 “...you could visit www.directions.com for more detailed information”，填入 www. 和 .com 中间的单词 directions 即可。

Question 10 (enquiring) online

听前预测：定位词为 contact，此处应填名词或名词性短语。

题目解析：定位至 “I think the most convenient way to contact us is enquiring online (我认为最便捷的方式是在线咨询)”，故此处填 (enquiring) online。

SECTION 2

Hello, and welcome to the home page for the Healthy Hearing Medical Clinic and Surgery, where we'd like to share a little more information about the services we provide and more.

Our hospital is one of the leading specialised hospitals in the United Kingdom, attracting the very best healthcare professionals from around the globe. Not only are we a leading medical practice, but we are also the only hospital in the United Kingdom dedicated entirely to the treatment of, and research into the curing of

hearing loss. Our facilities and staff here are renowned across Europe, attracting thousands of patients a year. Our consultations can number anything up to 11,000 patients a year, however we aim to treat around 5,000 patients a year so as to maintain and ensure the quality of our services. Our patients are guaranteed the highest standard of care, as well as the use of our first class facilities. All patients requiring overnight treatment are provided with their own private room with en-suite facilities, as well as a state-of-the-art entertainment centre, which includes a flat screen LCD television and Playstation.

Q11



Appointments with our healthcare professionals can be made at any time during the week, with female doctors available between 8 am and 11 am. If you need to see a doctor outside of these times, please visit the 'Out of Hours' page of our website for more information. Our doctors are all trained to an exceptionally high standard, and practice a vast array of specialties: Mr. Robert is a fully qualified ear and throat specialist, Mr. Edwards is a pediatric hearing specialist, while Mr. Green specialises in reversing hearing loss. For more details about our people, please visit the 'Staff Members' page on our website.

Q12

Q13

During a consultation, doctors will sometimes decide medication is required, for which patients should receive a prescription. There are several pharmacies within the city; however we recommend that patients use the pharmacy housed within our health care facility. Our in-house pharmacy is well-stocked at all times, our products are competitively priced, and our pharmacists are on hand to help and advise from 8 am until 10 pm from Monday to Saturday, and from 9 am until 12 pm on Sundays. If you require any help outside of these hours, please see our 'Out of Hours' page on the website.

Q14

Since the Healthy Hearing Medical Clinic and Surgery also functions as a teaching hospital, we aim to provide our students with every opportunity to expose themselves to medicine in practice. Therefore we would like to encourage our patients to give their consent for a medical student to attend their consultations. If our patients are not comfortable with this, there will be a form at reception where patients will be able to opt out.

Q15

Now, please look at the map I've given you of the Healthy Hearing Medical Clinic and Surgery. For those not familiar with our practice, reception can be

Q16

found through the main door at the end of the corridor. If your consultation is booked with Mr. Green, you need to go through the main door and turn right by the nurses' desk, and his office is at the end of the corridor on your left-hand side. If you need to alter any of your personal details, please visit our secretary at the Office for Medical Records, which you will find next to the therapy room. If you're awaiting surgery, please first check in with reception, before taking the first door on the right after you enter the clinic. Finally, in the event that you feel disappointed with any of the services we have provided, or have any further questions, please locate our Manager's Office, which can be found near the Office for Medical Records and between two closets.

Q17

Q18

Q19

Q20

If you have any more questions about the Healthy Hearing Medical Clinic and Surgery, please do not hesitate to contact us on 01256 111 111. [fade out]

SECTION 2 解析

Question 11 C

听前预测：定位词为 patients, consult。

题目解析：出题句为 “Our consultations can number anything up to 11,000 patients a year, however we aim to treat around 5,000 patients a year so as to maintain and ensure the quality of our services.” 由此了解到，前来咨询的病人多达 11,000 人，但收治的只有 5,000。题目问的是每年到医院咨询的人数，因此选 C。

Question 12 A

听前预测：定位词为 female doctor。

题目解析：考点句为 “Appointments with our healthcare professionals can be made at any time during the week, with female doctors available between 8 am and 11am.” 预约女性医生的时间为工作日的上午 8-10 点，在英美国家上午 12 点前都叫 morning，因此答案选 A。

Question 13 B

听前预测：定位词为 hearing loss。

题目解析：原文所述 “while Mr. Green specialises in reversing hearing loss (格林先生专门从事听力损伤的治疗)”，故选 B。

Question 14 C

听前预测：定位词为 recommended, buy their medicine。

Q17
Q18
Q19
Q20

题目解析：本题出题句为“...we recommend that patients use the pharmacy housed within our health care facility. (建议病人在我们保健中心内的药房买药)”，本题答案为 C。

Question 15 A

听前预测：定位词为 patients, are willing to do。

题目解析：本题出题句为“Therefore we would like to encourage our patients to give their consent for a medical student to attend their consultations. (因此，我们希望病人同意医科学生参与他们的会诊)”，这里 consent 同义替换了 willing，本题选 A。

Question 16 F

听前预测：定位词为 Reception。

题目解析：根据“reception can be found through the main door at the end of the corridor. (通过正门，一直走到走廊尽头就是接待处)”，对应地图中的 F。

Question 17 H

听前预测：定位词为 Mr. Green's Room。

题目解析：根据“If your consultation is booked with Mr. Green, you need to go through the main door and turn right by the nurses' desk, and his office is at the end of the corridor on your left-hand side”，根据图中已给 nurses' desk 的位置即可确定，Mr. Green's Room 对应地图中的 H。

Question 18 A

听前预测：定位词为 Medical Records Office。

题目解析：本题较难，首先根据“...please visit our secretary at the Office for Medical Records, which you will find next to the therapy room”可知，Medical Records Office (档案室) 在 therapy room (治疗室) 的旁边，对应地图中的 A 或 B，再根据后面讲 Manager's Office 的信息“near the Office for Medical Records and between two closets”，得出应选 A。

Question 19 D

听前预测：定位词为 Surgery Room。

题目解析：根据“If you're awaiting surgery, please first check in with reception, before taking the first door on the right after you enter the clinic”抓取关键信息 taking the first door on the right，可知 Surgery Room 对应地图中的 D。

Question 20 C

听前预测：定位词为 Manager's Office。

题目解析：根据“please locate our Manager's Office, which can be found near the Office for Medical Records and between two closets”可知在两个 closets 中间的房间即为 Manager's Office，也就是 C。

SECTION 3

Jim: Jane, what did you think of Professor Morgan's lecture? I don't know about you, but I find it incredibly difficult to believe that light influences the environment as much as he says. I've never seen any journal articles, websites or anything that verifies his argument. It's stupid.

Jane: On the contrary, I've seen a great deal of research supporting his argument from a wide range of renowned scientists. Have you looked at the recommended textbook listed on the course outline given to us at the beginning of the semester? All the information is in there, perhaps you've just been looking in the wrong places.

Jim: I never look at the course outlines, I have so many loose sheets of paper I tend to lose anything I'm given by the end of the day. What's the textbook they recommend, and where can I get it from? I should probably go buy it soon; I'm already behind in the course.

Jane: Yeah, you definitely should buy it, and our grades are more important this year! It's called 'The Influence of Light on the Environment'. You should be able to find it in the bookshop on campus. If not, they'll order it within two weeks. In the meantime, you should read up on Ken Simpson's work, he argues that in order to protect natural habitats, governments should endeavor to turn off lights in cities at night.

Jim: Well that's controversial; I doubt any government would be willing to do that any time soon. I imagine roads would become quite dangerous without street lighting. For this issue, Dave Kepler suggests they could just replace the existing lights with more environmentally friendly bulbs. They could even install solar-powered lights; that way, roads will be more eco-friendly while maintaining safety. Although I guess they wouldn't be particularly effective in colder countries, especially during the winter.

Jane: That's quite a good idea actually. The price of solar power is supposed to be on par with electricity within the next few decades, and it was on the news this morning. I've also heard that, according to Sharon Grey, in countries with more sunlight, insect-eating animals tend to be smaller in size. Since there are fewer insects, and the remaining insects produced a smaller number of eggs.

Jim: Yeah, I think I read somewhere that sunlight also has a negative effect on the quality of water, but I'm not sure I believe it. In many hot countries, particularly developing countries, there is a lot of water pollution caused



Q21

Q22

Q23

by factories rather than sunlight. Nevertheless, Maria Jackson says that in direct sunlight, the surface of the water becomes more translucent, therefore it affects the amount of sunlight that aquatic insects can absorb. Not much research has been undertaken to prove Jackson's theory, but it seems to have been widely accepted anyway.

Q24

Jane: I've never heard of that. I'll have to look it up on Google. The only other theory I've studied is Barbara Swallow's study on how declined insect population adversely affects the frog population. Not that I'm complaining...I hate insects, especially spiders.

Q25

Jim: You have arachnophobia? I never would have guessed. Didn't your brother have a pet black widow spider?

Jane: Yes, he did, and I hated it. It escaped from its cage once and we never found it. I had nightmares for months.

Jane: Okay, now I'm getting goose bumps, let's change the subject. What's your stance on natural and artificial light?

Jim: Honestly, I'm not sure it makes much difference which one you use; species will die out either way. I think the real argument we should consider is global warming and protection or replacement of finite fuels. Solar power provides us with an incredible opportunity to replace electricity, and governments should definitely increase spending on research in this field. The theories discussed in our lectures, like Simpson's and Grey's, are so vague and lack proof, so I don't understand why we even study them.

Q26

Jane: I see what you mean. I don't like learning unsupported theories for exams, and I'd rather spend my time learning something else. For example, I'd be much more interested in studying the animals in safari parks than researching migratory birds, particularly the effect of tourists on the quality of life of animals. As we know, every year thousands of visitors will drive in their own vehicles or ride in vehicles provided by the facility to observe freely roaming animals.

Q28

Jim: Yeah, that would be really interesting! Especially those animals living in more tropical countries, like Borneo. Following on from that, I want to study how bringing animals over from foreign countries to put in our zoos affects their life expectancy. For example, do you remember when China sent pandas to Edinburgh Zoo? Apparently one of the pandas became

Q29

Q30

depressed, but it was never explained why. To me, obviously, you can't take an animal out of its natural habitat and put it in a cage on the other side of the world. It just doesn't work...[fade out]

SECTION 3 解析

Question 21 A

听前预测：定位词为 Ken Simpson。

题目解析：出题句为“you should read up on Ken Simpson's work, he argued that in order to protect natural habitats, governments should endeavor to turn off lights in cities at night.”其中 endeavor to turn off lights in cities at night (夜间尽量熄灭城市的灯火)，主导者为 governments，因此与 A 选项对应。

Question 22 B

听前预测：定位词为 Dave Kepler。

题目解析：定位至“For this issue, Dave Kepler suggests they could just replace the existing lights with more environmentally friendly bulbs.”其中 replace the existing lights 为 alternative lighting 的同义替换，故本题选 B。

Question 23 F

听前预测：定位词为 Sharon Grey。

题目解析：根据定位词定位至“I've also heard that, according to Sharon Grey, in countries with more sunlight, insect-eating animals tend to be smaller in size.”Sharon Grey 的观点是：在阳光多的国家以昆虫为食的动物的体型较小，也就是对动物生长造成一定的影响，因此选 F。

Question 24 G

听前预测：定位词为 Maria Jackson。

题目解析：本题出题句为“Nevertheless, Maria Jackson says that in direct sunlight, the surface of the water becomes more translucent, therefore it affects the amount of sunlight that aquatic insects absorb. (然而，Maria Jackson 说，在阳光直射下，水面会变得更半透明化，从而会影响水生昆虫对光的吸收)”，也就是对水质有一定的影响，故本题选 G。

Question 25 D

听前预测：定位词为 Barbara Swallow。

题目解析：定位至提到 Barbara Swallow 的句子“The only other theory I've studied is Bar

Swallow's study on how declined insect population adversely affects the frog population." Barbara Swallow 的研究是关于昆虫数量下降对其他物种（青蛙）造成的不利影响，对应选项 D。

Question 26 A

听前预测：定位词为 difference。

题目解析：定位到 "I'm not sure it makes much difference which one you use; species will die out either way." 其中 "die out" 意为 "灭绝，消失"，故本题选 A。

Question 27 C

听前预测：定位词为 felt unsatisfied。

题目解析：本题出题句为 "The theories discussed in our lectures, like Simpson's and Grey's, are so vague and lack proof, so I don't understand why we even study them." 其中 "vague" 意为 "模糊的，含糊的"，"lack proof" 意为 "缺乏证据"，故本题选 C：本领域的许多理论缺乏充足的证据。

Questions 28-30 B & E & F (IN ANY ORDER)

听前预测：定位词为 interested in studying, in the future。

题目解析：定位至 "I'd be much more interested in studying the animals in safari parks than researching migratory birds, particularly the effect of tourists on the quality of life of animals"，其中 safari parks (野生动物园) 同义替换 wildlife park。"much more interested in studying the animals in safari parks than researching migratory birds" 意为 "对研究野生动物园里的动物比研究鸟类迁徙更感兴趣"，由此可排除 C，答案选 B。原文 "the effect of tourists on the quality of life of animals" 说的是游客对动物生活质量的影响，A 选项说的是游客的生活质量，不选。接着 "Especially those animals living in more tropical countries, like Borneo" 对应 E 选项。最后 "I want to study how bringing animals over from foreign countries to put in our zoos affects their life expectancy"，据此选 F。

SECTION 4

Great Britain is often hailed as the home of football, with talented players travelling from far and wide to play for teams in the English Premier League – one of the most popular football leagues on the planet. Today we are going to take a look back to the 19th century Great Britain in an attempt to trace the evolution of 'the beautiful game' as it is now known.

Prior to the 19th century, the game featured a wide variety of local and regional adaptations, which were later smartened up and made more uniform to create our

modern-day sports of association football, rugby football, and Ireland's Gaelic football. Even up to the mid-19th century, Shrovetide football or 'mob football' was still widely practiced. According to the rules of mob football, there were no rules...a player could legally use any means whatsoever to obtain the ball, such as kicking, punching, biting and gouging, with the only exceptions being murder and manslaughter. These games may be regarded as the ancestors of modern codes of football, and by comparison with later models of football, they were chaotic and had few cooperation. Towards the latter end of the 19th century and moving into the early part of the 20th century, however, there appeared a new found emphasis on moral values in football. Perhaps a more modern example of this can be seen in John Terry's suspension as England captain following reports of his infidelity to his wife. Furthermore, as mob football died away, there grew a greater concern for players' health and general well-being, with many clubs affording their top players access to frequent medical check-ups and treatment. Despite the presence of Great Britain's unique state-funded National Health Service, football clubs are still seen today providing team members with state-of-the-art healthcare facilities, with the top clubs even housing their own specialist doctors and physicians.

Q31

Q32

Today, football is a key feature of school children's day-to-day education, particularly for boys. With the help of football associations, all schools in the UK are boasting their own football teams. This mainly comes as a result of pressure put on schools and the government by concerned parents, who felt that football education taught their children valuable lessons and indeed vital life skills, such as teamwork and a drive to succeed. Nowadays, many of the UK's top football clubs provide training facilities and outreach programmes in an attempt to educate the nation's aspiring youths.

Q33

As I previously mentioned, it was only during the 19th century that football in its uniform concept truly began to emerge, with footballers previously playing according to their own versions of the rules. However, it was not until the early 20th century that different players actually began to play according to these standardised rules. Prior to the 19th century, football was played by all the major English public schools including the likes of Eton College, Winchester College, and Harrow. In 1848 there was a meeting at Cambridge University in an attempt to lay down the laws of football. Present at the meeting were representatives of each of these major public schools, whom each brought a copy of the rules

enforced by their own individual school's rules of football. The result of the meeting was what is now known as the 'Cambridge Rules', thereby uniting the rules from across the country into one simple document. However, the Cambridge Rules were not liked by all, and a new set of rules, 'Thring's Rules' compounded in the book 'The Simplest Game' became common place among dissenters.

Q35

Across the country, improvements in infrastructure and public transport had a knock on effect of dramatically increasing attendance to football games. Football quickly became a social event where spectators would meet friends, drink tea and chat about the good old days. As football became more and more popular, it was decided that more money should be invested in maintaining the quality of pitches amongst other things, and there was even talk of installing seating for spectators. However, the question of who was to foot the bill quickly became a divisive issue, with many believing that the government should fund football's development as a national sport. But in the end, the onus fell upon Britain's local and regional football clubs for the funding and development of the football association. They became responsible for the upkeep of football grounds, began to pay their best players a small salary, and organised competitions against other local and regional teams. And there began England's Football Association, or the FA, as we know it in its current form, the governing body of football in England. As the FA continued to grow and accumulate greater wealth, it was able to attract more and more talented young men from across the country, before finally accepting professional talent in the early 20th century. Today, football is played at a professional level all over the world. Millions of people regularly go to football stadiums to follow their favourite teams, while billions more watch the game on television or on the Internet. [fade out]

Q36

Q37

Q38

Q39

Q40

SECTION 4 解析

Questions 31-32 C & D (IN EITHER ORDER)

听前预测：定位词为 the end of the 19th century。

题目解析：定位到两个位置：“...there appeared a new found emphasis on moral values in football” 中的 moral values 意为“道德价值观”，对应选项 C；“...there grew a greater concern for players' health and general well-being...” 中 players' health and general well-being 为 player's physical

Question 33 parents

听前预测：定位词为 UK schools，提示词 pressure，此处应填名词。

题目解析：根据 “This mainly comes as a result of pressure put on schools and the government by concerned parents. (主要是忧心忡忡的父母们给学校和政府施加压力的结果)”，填 parents。

Question 34 versions

听前预测：定位词为 Prior to the 19th century，此处应填名词。

题目解析：出题句说 “...with footballers previously playing according to their own versions of the rules. (足球运动员起初按照各自的规则踢)”，那么也就是有 different versions of rules。

Question 35 country

听前预测：定位词为 standardise，提示词为 Cambridge Rules，此处应填名词。

题目解析：出题句为 “The result of the meeting was what is now known as the ‘Cambridge Rules’ thereby uniting the rules from across the country into one simple document.” 其中 uniting 是 standardise 的同义替换，“uniting the rules” 表示 “统一规则”，因此 “Cambridge Rules” standardise the rules from the whole country。

Question 36 transport

听前预测：定位词为 Attendances，提示词为 improvement，此处应填名词。

题目解析：定位至 “Across the country, improvements in infrastructure and public transport had a knock on effect of dramatically increasing attendance to football games. (全国各地，基础设施和公共交通的改善使得参加足球运动的人数显著增加)”，因此 improvements in infrastructure and public transport 可同义替换到题目中，即为 improvement of infrastructure and the transport system。

Question 37 social

听前预测：定位词为 became popular，提示词为 event，此处应填形容词或名词。

题目解析：本题根据 “Football quickly became a social event...” 可知此处应填 social。

Question 38 funding

听前预测：定位词为 responsible for，提示词为 football association，此处应填名词。

题目解析：本题定位至 “But in the end, the onus fell upon Britain’s local and regional football clubs for the funding and development of the football association.” 其中 “onus” 意为 “责任”，responsible for 形成同义替换，整句的意思为：最终，为足球协会筹资及促进协会发展的责任到了英国本地和区域性足球俱乐部身上。本题应填 funding。

Question 39 Competitions

听前预测：定位词为 organised，提示词为 against，此处应填名词。

题目解析：根据 “They became responsible for the upkeep of football grounds, began to pay their best players a small salary, and organised competitions against other local and regional teams. (他们负责对足球场进行养护, 开始给最佳选手发少量的酬劳, 组织本地和区域球队间的比赛)”, 可知此处应填 Competitions, 注意首字母要大写。

Question 40 professional

听前预测：定位词为 1910s, 提示词为 approved, 此处应填形容词或名词。

题目解析：定位至 “As the FA continued to grow and accumulate greater wealth, it was able to attract more and more talented young men from across the country, before finally accepting professional talent in the early 20th century.” 主要根据后半句作答, 这里 accepting 是题干中 approved 的同义替换, talent 指的就是 football players, 因此本题填 professional。

SECTION 1

- OLIVIA: Hi Zach! I heard you passed your driving test! Congratulations!
- ZACH: Thanks Olivia! I passed just last week. It feels great to be independent and driving on my own!
- OLIVIA: I really want to take driving lessons, but I haven't been able to find a driving school that will give lessons during the weekends so that I don't have to miss any classes at college. *Example*
- ZACH: The driving school that I used was brilliant and really flexible with their teaching hours. It's really close to school. The address is 67 King's Road – that's 67-KING-apostrophe-S Road. *Q1*
- OLIVIA: Oh that's perfect! I don't like the idea of driving around busy streets. Did your teacher make you drive in urban areas or did he mainly teach you on roads in the countryside?
- ZACH: My teacher said that I had to learn on both in order to become a good and experienced driver. We would start in the city centre and then drive north above the city. *Q2*
- OLIVIA: He sounds like a good teacher. Would you mind giving me his contact details so I can ask him for lessons?
- ZACH: Of course! My mother's friend Daniel Smith referred me to him. His name is Allen Sutcliffe.
- OLIVIA: Could you spell the surname please?
- ZACH: S-U-T-C-L-I-double-F-E. *Q3*
- OLIVIA: Thanks for helping me out, I'll give him a call tomorrow. I don't know if I should learn in a manual or automatic car. How do I decide?
- ZACH: I wasn't sure which type of car to learn in either. In the end I chose to learn in a manual car because once you've learnt how to drive manually you can drive automatic as well. Most cars on the road are automatic nowadays. *Q4*
- OLIVIA: OK, I think I'll learn with a manual car too then. Hopefully the teacher will be able to give me lessons in the evenings after school!
- ZACH: It would be much better if you take the lessons during the day. It will be far easier for you to learn when there is enough daylight to *Q5*

clearly see everything going on around you. But you need to be an experienced driver to drive safely at night.

OLIVIA: How frustrating! I was hoping I wouldn't have to take lessons during the weekends! You're right though, safety comes first!

ZACH: Speaking of safety, you should wait until summer to start learning! It's really difficult and dangerous to drive in the wind and rain as a learner so you should definitely wait until the weather is sunny and dry. Q6

OLIVIA: OK, that's perfect, actually! It will give me some time to save up some money to pay for the lessons.

ZACH: Tell me about it! I had to work for months before I had enough money saved up! It was worth all the work when I finally got my driving license though! Q7

OLIVIA: The whole process is so expensive! How much did it cost you in the end?

ZACH: Well, each half hour lesson cost \$30 and then the final test cost \$50. In total it cost me about \$300. Q8

OLIVIA: Gosh, it's pretty expensive! How did you find the test? Was it really difficult?

ZACH: No, it wasn't too bad, and the man was really calm and friendly. I knew that I would have to perform two parking manoeuvres during the test, so I practised them a lot beforehand and that really helped! The test used to last 40 minutes, but it changed a bit. For the first 20 minutes of the test he gave me directions and I had to just drive around and then the last 10 minutes was for demonstrating the manoeuvres, so the test is 30 minutes in total. Q9

OLIVIA: OK, great, I'll remember that! Do you have any more advice?

ZACH: It's really good to practise driving a lot outside of driving lessons as well. Whenever my parents were running errands on the weekends I would offer to drive them. My driving teacher also told me to buy a notebook to write down everything that I've learnt in it like a diary. Q10

OLIVIA: Haha, that sounds boring, but I'll do it if it helps.

ZACH: I found it really useful! Before my test I read through everything I had written down and it reminded me of a lot of things that I

had forgotten about! It's really helpful for the theory test as well because there's so much information to remember for it.

OLIVIA: That's great, Zach! Thanks for your help!

ZACH: No problem, see you at school!

OLIVIA: Bye!

SECTION 1 解析

Question 1 67 King's

听前预测：定位词为 Address，此处应填数字及路名。

题目解析：定位至“The address is 67 King's Road – that's 67-KING-apostrophe-S Road.”其中“apostrophe”意为“撇号”，所以填 67 King's。

Question 2 north

听前预测：定位词为 the city centre，此处应填名词。

题目解析：定位至“We should start in the city centre and then drive north above the city.”答案填 north。

Question 3 Sutcliffe

听前预测：定位词为 Teacher's name，提示词为 Allen，此处应填姓氏。

题目解析：本题简单，跟上字母拼写即可，注意是两个 f。

Question 4 automatic

听前预测：定位词为 Popular，此处应填形容词。

题目解析：定位至“Most cars on the road are automatic nowadays.”其中 Most 是 Popular 的同义替换，因此最流行的是 automatic。

Question 5 day

听前预测：定位词为 practice，提示词为 during，此处应填名词。

题目解析：定位至“It would be much better if you take the lessons during the day...”，所以练习最好选白天，答案为 day。

Question 6 weather

听前预测：定位词为 Safety driving，此处应填名词。

题目解析：本题根据“It's really difficult and dangerous to drive in the wind and rain as a learner so

you should definitely wait until the weather is sunny and dry”可知风雨天驾车对于学习者来说是很危险的，所以要等天气晴朗时再开。所以本题应填 weather。

Question 7 license

听前预测：定位词为 Obtain，此处应填名词。

题目解析：定位至 “It was worth all the work when I finally got my driving license though!” 此处 got 表示获得，根据 got my driving license 可知，本题填 license。

Question 8 50

听前预测：定位词为 Final test fee，此处应填数字。

题目解析：根据 “Well, each half hour lesson cost \$30 and then the final test cost \$50” 可知此处应填 50。

Question 9 30

听前预测：定位词为 Duration，此处应填数字。

题目解析：注意排除干扰信息 “used to last 40 minutes”，定位至 “For the first 20 minutes of the test he gave me...and then the last 10 minutes was for...so the test is 30 minutes in total.” 因此，考试总时长为 30 minutes。

Question 10 diary

听前预测：定位词为 More advice，此处应填名词。

题目解析：原文提及 “My driving teacher also told me to buy a notebook to write down everything that I've learnt in it like a diary”，结合题目所给信息，diary 一词正符合答案条件，构成 keep a driving diary (记驾驶日记)。

SECTION 2

Good morning, everybody and welcome to Mount Rushmore! To start your visit I'm just going to give you a brief account of the history of the memorial before letting you roam about on your own. I won't keep you long. OK?

Mount Rushmore is South Dakota's top tourist attraction and features the heads of four United States Presidents – George Washington, Thomas Jefferson, Theodore Roosevelt and Abraham Lincoln. Each head is 18 metres tall, which is taller than the heights of eleven people combined! The sculptor initially wanted to depict the presidents from head to waist, but due to a lack of funding the

construction had to stop before this vision could be realised. In total it cost the government \$1 million to sculpt the heads at Mount Rushmore. Q11

Before the construction of the presidents' heads, the mountain was just bare rock and forest attracting only a few hikers a year. The new carving at Mount Rushmore has become an iconic symbol of presidential greatness and has appeared in works of fiction and other popular works. The sculpture has also worked perfectly as a way to develop tourism, which was its intended purpose, and now attracts over two million people a year. Q12

The original plan was to carve the Presidents' faces into the granite pillars known as 'The Needles', however the sculptor soon realised that these rocks were too eroded and delicate to support such a large sculpture. Instead he chose to locate the carving at Mount Rushmore due to its grand appearance and brightly lit rock faces that experience maximum exposure to sunlight throughout the day as a result of the south-east orientation. Upon seeing Mount Rushmore, the sculptor declared 'America will march along that skyline.' Q13

The name of Mount Rushmore also has an interesting history. The location was originally known as the Six Grandfathers, however during an expedition in 1885 the mountain was renamed after Charles E. Rushmore, a prominent New York lawyer who joked that his annual treks to the mountain had earned him the right to have it named after him. Forty years after the mountain was renamed, Charles E. Rushmore donated \$5,000 towards the sculpting of the president's heads – the largest single contribution. In 1927 the construction work started and seven years later was complete with no fatalities. Q14

So that's the history for you. If you'd like any more information, please feel free to ask me questions, or you can soak up the information from our fantastic guide book. Q15

Now I'm going to give you a plan of the site and I'd just like to point out where everything is so that you can explore everything for yourself. We're currently standing at the entrance, which is marked with the arrow on the map. If you follow the trail up to our left, you will find the information centre. There's a great photo booth there where you can have your photograph taken with Mount Q16

Rushmore in the background for a fee of only \$10 – what a great souvenir! In front of us is the refreshment centre where you can help yourselves to coffee, locally grown tea and a delicious selection of cold drinks and biscuits. Be sure to stay hydrated as it can get really hot up here! To our right not far up the trail is the gift shop. Here we sell copies of the guide book and it's also the perfect place to pick up some small souvenirs for yourself, your family and friends. Now further up the trail behind the gift shop is a big stone building with a workshop. This is where all of our souvenirs are made by hand, which you can purchase in the gift shop like I said before. Some are even carved from pieces of rock taken from Mount Rushmore itself! If you carry on walking up the trail past the workshop you'll find our state of the art visitor centre where you can find maps of the walking trails here at Mount Rushmore. Now for the real treat! After you have walked past the visitor centre, you can follow the trail up to the left, which will take you to our wooden shelter. From here you will have the best view of Mount Rushmore that there is – an experience not to be forgotten!

Q17

Q18

Q19

Q20

Right, if anyone wants a guided tour then I'm starting at the information centre. If you'd like to follow me, this way please.

SECTION 2 解析

Question 11 1 million

听前预测：定位词为 government, paid, complete, 此处应填数字。

题目解析：定位至 “In total it cost the government \$1 million to sculpt the heads at Mount Rushmore.” 其中 “sculpt” 意为 “雕刻”，Mount Rushmore 拉什莫尔山（位于美国南达科他州）。总共花费 100 万美元，故本题答案为 1 million。

Question 12 tourism

听前预测：定位词为 purpose of the construction, 此处应填名词。

题目解析：定位至 “The sculpture has also worked perfectly as a way to develop tourism... (雕塑在发展旅游业方面起到了很好的作用)”，故此处应填 tourism。

Question 13 southeast/south-east

听前预测：定位词为 maximum exposure to sunlight, 此处应填 (方位) 名词。

题目解析：由于雕像面向东南方向，因此可以最大限度地接收光照，原文为“...its grand appearance and brightly lit rock faces that experience maximum exposure to sunlight throughout the day as a result of the south-east orientation”，故本题答案为 south-east 或 southeast。

Question 14 lawyer

听前预测：定位词为 1885，此处应填名词。

题目解析：本题解答依据为“...however during an expedition in 1885 the mountain was renamed after Charles E. Rushmore, a prominent New York lawyer... (1885年，在一次考察中，此山被重新以 Charles E. Rushmore 的名字命名，Charles 是纽约的一位著名律师)”，所以是 renamed after a lawyer，故此处填 lawyer。

Question 15 7/seven

听前预测：定位词为 finish，提示词为 years，此处应填数字。

题目解析：定位至出题句“In 1927 the construction work started and seven years later was complete with no fatalities. (修建工作从 1927 年开始，7 年后得以完工，期间未发生死亡事故。)”其中 complete 是 finish 的同义替换，都表示完成，本题答案填 7 或 seven。

Question 16 A

听前预测：定位词为 information centre。

题目解析：根据“If you follow the trail up to our left, you will find the information centre. (沿小径向左边直走，会找到信息中心)”可知 information centre 对应地图中的 A。

Question 17 C

听前预测：定位词为 refreshment centre。

题目解析：根据“In front of us is the refreshment centre...”可知 refreshment centre (茶点中心) 对应的是地图中的 C。

Question 18 E

听前预测：定位词为 gift shop。

题目解析：根据“To our right not far up the trail is the gift shop. (小径右侧不远处是礼品店)”，gift shop 对应地图中的 E。

Question 19 D

听前预测：定位词为 workshop。

题目解析：根据“Now further up the trail behind the gift shop is a big stone building with a workshop. (再往前走，在礼品店的后面是一个石质建筑的工作室)”，workshop 对应地图中的 D。

Question 20 B

听前预测：定位词为 visitor centre。

题目解析：根据 “If you carry on walking up the trail past the workshop you’ll find our state of the art visitor centre...” , 过了 workshop 之后是 visitor centre, 对应地图中的 B。

SECTION 3

CHARLOTTE: Excuse me, Dr Twain. May I speak with you for a minute?

DR TWAIN: Of course, please come in.

CHARLOTTE: I’m Charlotte York. I’m considering taking your course in Tourism.

DR TWAIN: Right. Well, Charlotte, how can I help you?

CHARLOTTE: I have been considering studying Tourism, however, it is such an important decision that I would like to seek some advice about it first. Would you mind answering some of my questions?

DR TWAIN: Absolutely, fire away!

CHARLOTTE: Well I have been discussing courses with my parents and they are concerned that I will not be able to get a well-paid job with a degree in Tourism. The reason that I want to study the course is that I have a great interest in the subject and I think I would really enjoy it. I believe the only way that I will enjoy my life is if I enjoy my career. Happiness is far more important than money, don’t you think? Q21

DR TWAIN: Absolutely. I would much rather be happy and poor rather than rich and miserable. Money cannot buy you happiness.

CHARLOTTE: I’m glad you agree.

DR TWAIN: You needn’t worry about money, Charlotte. A large part of the Tourism course is dedicated to teaching students how to manage finances, a skill that you can apply to your everyday life as well. I would also recommend that you take a sideline course in time management, as this can be incredibly useful in efficiently planning your workload. Efficiency is the key to success! Q22

CHARLOTTE: I’ll remember that.

DR TWAIN: Now I have found that some students have natural talents that

really help them to succeed in the course. Communication skills, for example, can be very beneficial. Do you have any strengths?

CHARLOTTE: Maths was always my favourite subject at school so I really enjoy solving mathematical problems, however I find statistics quite difficult. I have always been very capable and self-sufficient. I have a lot of confidence in my abilities and will take the initiative in situations without needing to depend on anyone else for their help.

Q23

DR TWAIN: That's a really great quality to have and will be particularly useful if you choose to study Tourism.

CHARLOTTE: That's great.

DR TWAIN: I would recommend that you spend some of your time researching the course. A lot of people who are uneducated on the subject claim that Tourism is a shrinking industry and that it will become irrelevant in the future. If you study the published research however, you will see that the truth is quite the opposite. The industry has, in fact, grown significantly as people have developed an ever-increasing interest in culture and travel. Have you compared the university course with a polytechnic?

Q24

CHARLOTTE: Yes, I have. I was interested in studying the course in modules. However, the university doesn't offer that option. I don't have enough funds to be able to attend an expensive university, so I was relieved to see that the course is quite affordable. I also considered attending a summer school instead of university to save money and so that I could work during the rest of the year, but I really wanted the university experience.

Q25

DR TWAIN: I think that university would suit you well.

DR TWAIN: Now, what about the courses? Are you interested in any of the other subjects on offer?

MELANIE: I have looked at a few. I was interested in Travel and Business as it sounds similar to Tourism.

DR TWAIN: That is really worth learning, however, be aware that it is difficult and will demand a lot of your time.

Q26

MELANIE:
DR TWAIN:

OK, that's good to know.
You might find that Japanese is an interesting course and it will teach you valuable skills in speaking the language. Personally, it's not bad and could be of some help, but not that much.

Q27

MELANIE:
DR TWAIN:

OK, Japanese, got that... What about Medical Care?
Well, if you have time, the course will teach you a lot about curing diseases and illnesses, or dealing with injuries outside, although it's not essential.

CHARLOTTE:

So, OK, if it's useful, I'll take it.

DR TWAIN:

If you enjoy using technology and are worried about fulfilling the entry requirements, computing is very relaxed about the skills that applicants must possess.

Q28

Q29

CHARLOTTE:

I'm terrible with computers so I'm not sure that I would enjoy that course. How about Public Relations?

DR TWAIN:

Yes, I would recommend that course. It would be related to entering the Tourism industry as it will educate you on how to approach clients and develop associations with them.

Q30

CHARLOTTE:

That's great! Thank you so much for your help!

SECTION 3 解析

Question 21 A

听前预测：定位词为 study Tourism。

题目解析：根据学生的观点 “I believe the only way that I will enjoy my life is if I enjoy my career. Happiness is far more important than money...” 可知，学生考虑的是将来从事的职业是否是自己喜欢的，故本题选 A。

Question 22 B

听前预测：定位词为 skill。

题目解析：老师说旅游专业课程很大一部分都是教学生如何理财的，原文为 “A large part of the Tourism course is dedicated to teaching students how to manage finances, a skill that you can apply to your everyday life as well”，故本题选 B。

Question 23 A

听前预测：定位词为 ability。

题目解析：根据学生自述“I have always been very capable and self-sufficient. I have a lot of confidence in my abilities and will take the initiative in situations without needing to depend on anyone else for their help. (我很有能力，也很独立。我对自身的能力十分自信，而且主动性强，不需要依赖于他人的帮助)”，从而可知本题选 A。

Question 24 C

听前预测：定位词为 the industry of tourism。

题目解析：定位至“The industry has, in fact, grown significantly as people have developed an ever-increasing interest in culture and travel. (随着人们对文化和旅游的兴趣的不断增长，旅游业发展迅速)”，故本题选 C。

Question 25 C

听前预测：定位词为 university course, polytechnics。

题目解析：出题句为“I don't have enough funds to be able to attend an expensive university, so I was relieved to see that the course is quite affordable”，从中可知学生觉得大学课程的费用很高，而 polytechnics 的课程价格是可以接受的，故本题选 C。

Question 26 E

听前预测：定位词为 Travel and Business。

题目解析：定位至“however, be aware that it is difficult and will demand a lot of your time.”由此可知 Travel and Business 比较难，需要很多时间，对应选项 E。

Question 27 A

听前预测：定位词为 Japanese。

题目解析：根据老师的观点“Personally, it's not bad and could be of some help, but not that much. (日语：有点用，但用处不大)”，对应选项 A。

Question 28 B

听前预测：定位词为 Medical Care。

题目解析：关于 Medical Care 的讨论，根据学生最后总结的观点“if it's useful”，选 B。

Question 29 D

听前预测：定位词为 Computer。

题目解析：根据“If you enjoy using technology and are worried about fulfilling the entry requirements, computing is very relaxed about the skills that applicants must possess”得知 Computer 的入门要求较为宽松，其中“fulfilling the entry requirements”为“达到入门要求”的意思，故本题选 D。

Question 30 C

听前预测：定位词为 Public Relations。

题目解析：定位至 “It would be related to entering the Tourism industry as it will educate you on how to approach clients and develop associations with them. (与旅游产业相关，因为它可以教你如何接近客户，促成与客户间的往来)”，related 与 relevant 为同义替换，由此选 C。

SECTION 4

Welcome class to your very first lecture in this series on Business in the Modern World conducted by myself, Dr Toby Bennett. Today we will be looking into the practice of company outsourcing, using TCP Technologies as a case study. Now, for those of you who are unfamiliar with this practice, I will give you a summative definition: company outsourcing involves the contracting of various business activities by one company to another. This practice will sometimes occur from a western company to a party based in a third world country, the rationale being to make significant financial savings on lower international labour rates and to potentially increase quality.

Now, our case study for today is TCP Technologies – a party located in India that receives outsourced tasks from western companies. The manager of TCP Technologies is a man called Manjeet Khanna who has personally developed a series of aims and philosophies by which the company is expected to operate. He claims that the most important of these philosophies is to create a workplace where each individual member has the opportunity to contribute their opinion to the operations of the company. That is to say that he found it important to develop a democratic environment.

Q31

As a means of ensuring quality from every individual at TCP Technologies, a grading system has been developed that encourages an ethos of hard work and recognises accomplishment. This grading of individuals is based upon a series of factors such as turnover, hours worked and efficiency. Every month Khanna publishes the grades on an internal website where staff can access not only their own grades, but also compare it to others. A spirit of playful competitiveness has developed through this method, which has resulted in increased efficiency and turnover across the company.

Q32

Khanna also saw it as essential to develop a culturally diverse group of employees as a means of presenting a multi-faceted image that would appeal to a host of potential employees from across the globe. This cultural openness has not only increased the quantity of incoming contracted opportunities by 7%, but has also benefitted the company itself significantly. A level of transparency now exists that had not before been apparent. According to questionnaires carried out recently, these newly introduced measures have significantly increased the rate of staff satisfaction, which has subsequently led to an increase of 32% in the company's income.

Q33

These figures are truly admirable and serve as a testament to the measures that Khanna has introduced to the workplace at TCP Technologies. In a recent interview published by the *Economist*, he declared, 'The figures speak for themselves – my system works!' When asked if he had any advice for companies on methods they could employ to streamline workflow and increase turnover, he replied, "It's simple, really. A company must see itself not as one entity comprised of nameless components, but instead as a living organism composed of cells, each one essential to the functioning of the whole. I suggest that the motto by which your management operates will be 'employee first'."

Q34

Q35

Many benefits have been reaped from the aforementioned changes in management style, such as a significant decrease in staff turnover. This improvement alone has solved many problems that had before stunted the growth of the company. A lot of these improvements came from the realisation that the solution does not have to be produced internally, but can come from any other company. The grading system also immeasurably enhanced the dynamics of the company. The fact that this measuring system is solely produced for staff members and inaccessible by management means that it cannot be used as a judging criterion for promotion. It has proven itself a relaxed and informal means of stimulating workflow.

Q36

Q37

When asked about specific features of his managing style, Khanna mentioned that it is important for him to respond personally to any complaints filed by staff members. Having found the existing complaints process slow and ineffective, he introduced a new online system that created a direct line of communication between Khanna and all employees of the company. The complaint form,

dubbed by Khanna as a ticket, eradicates the middleman, is easily accessible to all employees online and has an interface that can be instinctively navigated. Any staff-related complaint, such as those relating to air conditioning and food quality, can be submitted directly to Khanna via this online system. Entitlement to vacation is also a popular issue discussed through this forum. The main benefit of using this system is that staff must include their personal details on the ticket before they are able to submit it. In the past, anonymous complaints had been at the root of much confusion and caused many wasted work hours, so the new system has put a ban on this form of complaint.

Q38

Q39

Q40

That wraps up the lecture for today. Please remember that attendance is mandatory... (fade out)

SECTION 4 解析

Question 31 democratic

听前预测：定位词为 Main target，提示词为 environment，此处应填形容词。

题目解析：本题出题句为 “That is to say that he found it important to develop a democratic environment”，因此填 democratic。

Question 32 internal website

听前预测：定位词为 grades are published，此处应填名词。

题目解析：定位至 “Every month Khanna publishes the grades on an internal website...”，便知此处填 internal website。

Question 33 transparency

听前预测：定位词为 cultural openness，提示词为 the level of，此处应填名词。

题目解析：根据 “A level of transparency now exists that had not before been apparent” 可知透明度上有改善，故此处填 transparency。

Question 34 (company's) income

听前预测：定位词为 rate of staff satisfaction，此处应填名词。

题目解析：本题较容易，题目与原句的语序是一致的，只是将 growth 与 increase 进行了同义替换。原文为 “...these newly introduced measures have significantly increased the rate of staff satisfaction, which has subsequently led to an increase of 32% in the company's income”，故此处填 (company's)

income.

Question 35 employee first

听前预测：定位词为 motto。

题目解析：定位至 “I suggest that the motto by which your management operates will be ‘employee first’.” (建议管理运作的格言为 ‘员工至上’)”，因此填 employee first。

Question 36 solution

听前预测：定位词为 any other company，此处应填名词。

题目解析：根据 “A lot of these improvements came from the realisation that the solution does not have to be produced internally, but can come from any other company” 可知解决办法不一定只靠内部，还可以从其他任何公司获得，因此此处填 solution。

Question 37 promotion

听前预测：定位词为 not used for，此处应填名词或动名词。

题目解析：定位至 “...it cannot be used as a judging criterion for promotion. (它不能用作晋升的标准)”，故本题答案为 promotion。

Question 38 ticket

听前预测：定位词为 complaint form，此处应填名词。

题目解析：出题句为 “The complaint form, dubbed by Khanna as a ticket, eradicates the middleman, is easily accessible to all employees online...” 其中 “dubbed” 意为 “被……称为”，这里 Khanna 把 complaint form (投诉表) 叫作 ticket。

Question 39 vacation

听前预测：定位词为 any complaints，此处应填名词。

题目解析：在提到 air conditioning 和 food quality 的下一句， “Entitlement to vacation is also a popular issue discussed through this forum. (享受假期的权利也是论坛中的热门话题)”，由此可知，此处填的名词为 vacation。

Question 40 ban

听前预测：定位词为 anonymous complaint，此处应填名词。

题目解析：根据 “In the past, anonymous complaints had been at the root of much confusion and caused many wasted work hours, so the new system has put a ban on this form of complaint” 可知，由于 anonymous complaints (匿名投诉) 是造成困惑的根源，而且也浪费了许多工作时间，因此新的体系中被禁止了，故本题应填 ban。

TEST 4

SECTION 1

- Manager: Hi there, welcome to the Job Centre. How can I help?
- Lauren: Good morning, I'm here to enquire as to whether you have any jobs available at the moment?
- Manager: Yes, we have several available. What kind of job is it that you're looking for?
- Lauren: Well, um, I'll take any part-time jobs I can get. I'm really strapped for cash at the moment. Example
- Manager: Okay, bear with me while I have a browse on our system. [Pause] Here we are. We have three vacancies at the moment, all involving quite different roles.
- Lauren: That sounds promising. What are they?
- Manager: The first one is for a post as a receptionist. It says here that experience in reception or general administration is preferred, but not essential. Have you worked on a reception desk previously? Q1
- Lauren: No, I haven't. I had a baby quite young, and so I have very little work experience. Could you tell me a few more details?
- Manager: Yes, of course. The job will be to mainly provide quality customer service both over the phone and in person. When customers are waiting you will be expected to provide them with refreshments and ensure they have a first-rate experience. Q2
- Lauren: I think I could manage that, and I'm a very friendly person!
- Manager: That's great.
- Lauren: Do you have any information about the hours involved?
- Manager: It says here that you will be expected to work several early mornings, 4 days a week. Q3
- Lauren: Any other requirements?
- Manager: Yeah, you'll have to go through a couple of weeks of unpaid training before qualifying for the post. Q4
- Lauren: Hmm, I don't know if I would be able to fully commit to that. Did you say it's 4 days per week?
- Manager: Yeah, it says here 4 days a week, with another day off per week when requested in advance. It also explicitly states that at least one

Lauren: of your working days must fall on a weekend.
I'll have to think about that and talk to my babysitter.

Lauren: Are there any other roles beginning later in the day?

Manager: Yes, there's an advertisement here for a driver. It says you'll need a clean and valid UK driver's license, with absolutely no exception.

Q5

Lauren: No problems there. I passed my test first time and have never received any points.

Manager: It also explicitly states that you must be over twenty-five and have been driving for at least six years.

Lauren: That sounds quite exciting. Is there any more information?

Manager: Yep, it says here that working hours are flexible, and the employers are happy to work within your personal schedule since they employ multiple drivers.

Q6

Lauren: That's great.

Manager: The employers ask for a commitment to either mornings 5 days per week, evenings 5 days per week, or three full working days per week.

Lauren: I'm sure I can handle all that without a problem.

Manager: As well as driving the employers to and from work, they will ask you to perform various duties on their behalf, such as collecting the grocery shopping, and picking their children up from school.

Q7

Lauren: Do they need me to work a day on the weekend as well?

Manager: No, it says here that they only require you to work on weekdays, not weekends.

Q8

Lauren: That sounds interesting.

Manager: Okay, there's only one more left, another customer service-related post. It looks like it requires you to work short hours, quite late at night, so it might not be suitable for you. Do you want to hear about it anyway?

Lauren: Yeah, can't do any harm.

Manager: Okay, so it's a post for a cashier in a cinema in the centre of town. I'm sure you've been to the cinema a few times, so you can guess what kind of role it would be. They're quite short and late shifts, between 17.30 and 22.30 most nights, with slightly longer shifts on Friday and Saturday nights.

Q9

Lauren:

Mmm, can you tell me what the job involves?

Manager:

Yes, sure. It says that you'll be required to sell and dispense tickets, and provide refreshments. Also, they ask that you be quick on the computers since you'll also need to take bookings over the phone, but you'll receive basic training for that.

Q10

Lauren:

Do they need me to work weekdays as well?

Manager:

Well, it says here that if you request at least a fortnight in advance, they will grant you a day off on Mondays, but never on a weekend.

Lauren:

Mmm. I'll think it over and let you know later. Thanks for all your help.

SECTION 1 解析

Question 1 Receptionist

听前预测：定位词为 Position，此处应填名词（职位）。

题目解析：根据“The first one is for a post as a receptionist”作答，“post”在此处意为“职位”，第一个职位是接待员，因此填 Receptionist。

Question 2 (quality) customer

听前预测：定位词为 Duty，此处应填名词或形容词。

题目解析：定位至“The job will be to mainly provide quality customer service both over the phone and in person.”可知岗位职责是 provide quality customer service，所以填 (quality) customer。

Question 3 early mornings

听前预测：定位词为 Working hours。

题目解析：文中表述“It says here that you will be expected to work several early mornings, four days a week”，可知工作时间为 early mornings。

Question 4 training

听前预测：定位词为 Requirement。

题目解析：根据“Yeah, you'll have to go through a couple of weeks of unpaid training before qualifying for the post”得知需要进行几周的培训，因此此处填 training。

Question 5 Driver

听前预测：定位词为 Day off。

题目解析：本题需根据前一个职位的最后一处进行定位，提问：“Are there any other roles beginning later in the day?” 回答：“Yes, there’s an advertisement here for a driver.” 由此可知答案为 Driver。

Question 6 flexible

听前预测：定位词为 Working hours。

题目解析：此处再次提到 Working hours，原文说 “Yep, it says here that working hours are flexible”，故填 flexible。

Question 7 grocery shopping

听前预测：定位词为 collect，此处应填名词。

题目解析：作为司机的工作职责有：接送雇主上下班、超市购物、接送孩子等，原文为 “As well as driving the employers to and from work, they will ask you to perform various duties on their behalf, such as collecting the grocery shopping, and picking their children up from school.” 故 collect 的是 grocery shopping。

Question 8 weekends

听前预测：定位词为 Day off，此处应填名词。

题目解析：根据提问 “Do they need me to work a day on the weekend as well?” 和回答 “No, it says here that they only require you to work on weekdays, not weekends.” 可知周末是休息的，所以此处填 weekends。

Question 9 cinema

听前预测：定位词为 Cashier，此处应填名词。

题目解析：本题较简单，可直接听到 “...it’s a post for a cashier in a cinema...”

Question 10 bookings

听前预测：定位词为 provide refreshments，此处应填名词。

题目解析：当听完 provide refreshments 后，接下来的一句为 “Also, they ask that you be quick on the computers since you’ll also need to take bookings over the phone...”，由此可知还有电话订票，此处填 bookings。

SECTION 2

Thank you all for coming to my talk this evening. It’s nice to see so many people in the audience. For those of you who don’t know very much about



'Connection', let me start by giving you some background information about it.

'Connection' is a British organisation that facilitates homestays all over the globe. This organisation prides itself on matching tens of thousands of host families with guests every single year, allowing travellers to discover a country's culture in a way like no other. Homestays are ideal for both travellers and homeowners, enabling inter-cultural exchanges and the development of life-long friendships, while providing travellers with often discounted accommodation costs, and host families with a steady income from the comfort of their own homes. The homestay experience is particularly popular with university exchange students looking for a more genuine insight into their country of choice, and an unrivalled opportunity to develop their language skills. The homestay experience is truly unique and once-in-a-lifetime, and one that you will likely remember for the rest of your lives. It is important to note, however, that some people will find it difficult to adapt to the new country, with many enduring what is known as 'culture shock'. Connection's advice for those suffering from culture shock, is to go out and make as many friends as possible, no matter how difficult you may find it. Friends are guaranteed to help you feel more integrated as part of the local society, and show you some great places to hang out. At first, it might seem extremely challenging to overcome the language barrier between you and your host family; however, you will find that you quickly overcome this and develop a very close and almost familial relationship. Many of our travellers have suggested that they have found discussing their hobbies and other interests with their host families is the best way to overcome any barriers, since you are more than likely to find something you share in common. For example, you might find that you are both passionate about football, and end up playing in the local field every week. One of our guests undertaking a homestay in a rural area of the UK told us that she and her host now take a Tai Chi class together upon a hilltop at sunrise, calling the experience 'absolutely breathtaking'. After the first few weeks, you will find your understanding of the people around you and their culture deepens by leaps and bounds, and you will soon become one of the locals. Our hosts, in over 140 countries, turn a location into a culture, time into experience and strangers into friends.

Q11

Q12

Q13

Q14

So how can you find out about applying for a homestay? The best way would

be to visit Connection's website, www.connection.com, and contact one of their friendly advisors for more information. Once you have confirmed your interest in the service, we would strongly advise that you remain in close contact with the registration office, which will send you several emails keeping you up-to-date with potential matches in your country of choice. Once registered, Connection will require you to send various documents, and will act as an intermediary between you and the host family prior to final confirmation and payment. During this stage, Connection will ask you to provide two photos, one for the host family, and the other for our own records. Please ensure that you sign the back of each photo. Due to the nature of the service Connection provides, security is an absolute must, and they will ask you to send in photocopies of your passport, birth certificate, and a bank statement as confirmation of your identity. On receipt of these documents, the official process will begin and your bank account will be debited for the initial deposit of £200. If you haven't received any acknowledgement confirming receipt of these documents from us within seven working days, please contact the main office. As I mentioned before, due to the nature of the organisation, Connection operates a meticulous screening process, and all applicants will undergo an interview in our head office in London, with exceptions made in extreme circumstances. After your interview, it may take us several weeks to carry out the decision process, so please be patient with us. If you would like a fast-track service, please indicate this on your application and we will notify you of the additional charges. Finally, once we have come to a result about your application, you will receive a decision in the post. If you do not receive an offer of placement, we will refund your deposit within 7 working days.

SECTION 2 解析

Question 11 C

听前预测：定位词为 host families。

题目解析：本题三个选项分别为赚一大笔钱、无报酬、稳定的收入。根据定位词可定位至“... host families with a steady income from the comfort of their own home”可知寄宿家庭在自己家中就可获得稳定的收入，故本题选 C。

Question 12 B
听前预测：定位词为
题目解析：本题出题
and make as many fri
化冲击带来的影响，

Question 13 A
听前预测：定位词
题目解析：要克服
found discussing th
any barriers”，故

Question 14
听前预测：定位
题目解析：本题
around you and t
围的人及文化有

Question 15
听前预测：定
题目解析：
office” 填空

Question 16
听前预测：定
题目解析：
此处填 reco

Question 17
听前预测：
题目解析：
in photoc
passport

Question 18
听前预测：
题目解析：
from us
认回执

Question 12 B

听前预测：定位词为 guest, culture shock。

题目解析：本题出题句为 “Connection’s advice for those suffering from culture shock, is to go out and make as many friends as possible, no matter how difficult you may find it.” 从中可知，为克服文化冲击带来的影响，无论多难，都要尽可能地多交朋友，故本题选 B。

Question 13 A

听前预测：定位词为 become familiar。

题目解析：要克服接触障碍，可以通过谈论兴趣爱好跟主人熟悉起来，原文为 “...they have found discussing their hobbies and other interests with their host families is the best way to overcome any barriers”，故本题选 A。

Question 14 A

听前预测：定位词为 in the long run。

题目解析：本题考点句为 “After the first few weeks, you will find your understanding of the people around you and their culture deepens by leaps and bounds”，从中可知，经过一段时间，客人会对周围的人及文化有突飞猛进的理解，因此本题选 A。

Question 15 registration office

听前预测：定位词为 Keep in touch with，此处应填名词。

题目解析：根据 “we would strongly advise that you remain in close contact with the registration office” 填空，其中 remain 是 keep 的同义替换词，故本题填 registration office。

Question 16 records

听前预测：定位词为 two photos，此处应填名词。

题目解析：根据 “provide two photos, one for the host family, and the other for our own records” 可知，此处填 records。

Question 17 identity

听前预测：定位词为 documents，提示词为 confirm，此处应填名词。

题目解析：此处提到需要发送一些证件的复印件来证明身份，原文为 “they will ask you to send in photocopies of your passport, birth certificate, and a bank statement as confirmation of your identity.” passport “护照”；birth certificate “出生证明”；bank statement “对账单”，故本题填 identity。

Question 18 acknowledgement

听前预测：定位词为 Receive，此处应填名词。

题目解析：原文说 “If you haven’t received any acknowledgement confirming receipt of these documents from us within seven working days, please contact the main office. (若 7 个工作日内未收到接收确认回执，请联系总部。)” 也就是说，正常的话，7 个工作日内就可以收到 acknowledgement。

Question 19 interview

听前预测：定位词为 in London，此处应填名词。

题目解析：根据“all applicants will undergo an interview in our head office in London”可知，要去伦敦总部面试，故本题填 interview。

Question 20 decision

听前预测：定位词为 written，此处应填名词。

题目解析：根据“Finally, once we have come to a result about your application, you will receive a decision in the post”可知，最终收到的是一份 decision。

SECTION 3

Professor: For next week, I'd like you to undertake a piece of research in preparation for writing your final essay. In order to gain top marks, you must include a range of primary, secondary, and tertiary sources. Are there any questions?

Douglas: Yes, Professor, I have a question. We haven't yet covered how to undertake this sort of research in much depth, and I'm a little unsure of what you want us to do. In telling us to include primary sources, do you mean you want us to design and distribute a questionnaire, analysing the results?

Professor: You could design a questionnaire, but you'll soon find that distributing a questionnaire on such a large scale is somewhat troublesome. We couldn't possibly expect you to do it effectively as an individual university student without the necessary resources. No, ideally I would like you to form one or two focus groups, and interview them. This will provide you with a more qualitative approach. If your strengths lie in mathematics, please by all means take a more quantitative approach, but this will be more strenuous and time consuming, and isn't entirely necessary for the purpose of this study. Q21

Jane: Professor, you haven't told us what our project is about. Do we get to choose our own topic based on the previous study?

Professor: No, I'm afraid not. This will be a strictly Australian study; Q22



Douglas:

however, you can choose which angle you'd like to take, so long as it remains within the realm of anthropology. Does anyone have any questions specifically about the formation of the focus groups? I've had several emails about this, and I'd like to address it now. My study is related to growing up in Australia, and the question of nature versus nurture. I've gathered more than two hundred school children who would be happy to participate in a focus group. Do you think we'll need to include that many participants in a focus group?

Professor:

Blimey, Douglas, well done for finding that many willing children, but you definitely don't need that many for the study you're going to undertake. I'd say you need no more than five children per group, and no more than three groups, so fifteen children altogether. You definitely need to control the group size in order to generate a meaningful dialogue.

Q23

Douglas:

OK, if it's useful, I'll try and do it...

Professor:

I appreciate your enthusiasm for the project, but there are plenty of different ways to gather data, and I'm sure that if you look hard enough, you'll find someone who has conducted almost the exact same research in the past. My advice for you is don't be too ambitious, and try to include as much information about various people or sectors.

Q24

Jane:

For those who haven't ever collected original data before, what do you suggest we do?

Professor:

I would suggest that you read accounts from other people who have undertaken such research to see what advice they can give. I would also encourage you to read Chapter Eight in the course textbook, which should give you a good introduction to collecting data. Moreover, you should try to practice using the data table provided in your course handbook. By now you should have read at least six or seven books giving quite detailed instruction on how to go about collecting data.

Q25

Douglas:

Professor, I don't know about everyone else, but I'm having trouble reading the books. I had a really big assignment for another course and I've been spending all my time on that. Jane, have you read all the books the professor mentioned?

Q26

Jane:

Well, my trouble is getting hold of the books. I've been to the

Professor: library several times, but all the books are out.
Jane: Sounds like you should have started borrowing books a bit earlier.
Jane: Yes, I should have. But I got several ones from my friend a couple of days ago. I just skimmed through them, and don't remember a lot of the information.

Jane: But now let's look at these things. We'll need to start thinking about which ones we'll definitely want to do for the project.

Douglas: Okay. The first one here is the final report.
Jane: If you like, we can work together on the research and data-collection side of the project, and doing the final write-up? Q27

Douglas: Cool. That sounds good. I'm not sure how much I'd be able to contribute considering I haven't had a chance to read the course material. But I should be able to prepare some sheets and a list of questions that can be used during the focus group sessions. Q28

Jane: That sounds appropriate. I think so too.

Douglas: Do you think we'll need to write a letter to send to the participants, telling them the time and place for the interviews?

Jane: Positive. I can take care of that. Q29

Douglas: Well, that's great.

Jane: I should also include a document for them to sign saying that they're happy to be voice-recorded.

Douglas: Oh yes, of course. I forgot about the transcript. That'll likely be a big job, so let's do half each, I'll do one of the groups and you can do the other. Okay? Q30

Jane: Sounds like a plan!

SECTION 3 解析

Question 21 A

听前预测：定位词为 research method。

题目解析：教授推荐的研究方法是 interview，原文是“ideally I would like you to form one or two



Question 23

听前预测：定位
题目解析：本
meaningful dialo

Question 24

听前预测：定
题目解析：教

Question 25

听前预测：定
题目解析：g
practice using

Question 26

听前预测：定
题目解析：g
been spending

Question 27

听前预测：定
题目解析：g
side of the
report 的同

Question 28

听前预测：定
题目解析：g
used durin

Question 29

听前预测：定
题目解析：g
回答“1

focus groups, and interview them.” 故本题选 A。

Question 22 C

听前预测：定位词为 based on。

题目解析：根据教授所述 “This will be a strictly Australian study...” 可知，此题选 C。

Question 23 B

听前预测：定位词为 the formation of the focus groups。

题目解析：本题出题句为 “You definitely need to control the group size in order to generate a meaningful dialogue.” 即只有 control the group size, 才能促成有意义的对话，故本题选 B。

Question 24 B

听前预测：定位词为 do the project best。

题目解析：教授给出的建议是 “don't be too ambitious”，对应选项 B。

Question 25 C

听前预测：定位词为 gather data。

题目解析：gather data 在原文中的同义替换是 collect data, 教授对 Jane 说 “you should try to practice using the data table”，故本题选 C。

Question 26 A

听前预测：定位词为 reference books。

题目解析：学生自述读书上有困难，因为 “I had a really big assignment for another course and I've been spending all my time on that”，也就是说他没有足够的时间完成阅读，因此选 A。

Question 27 C

听前预测：定位词为 final report。

题目解析：根据女生的提议 “If you like, we can work together on the research and data-collection side of the project, and doing the final write-up?” 可知，她想一起完成 final report, write-up 是 report 的同义替换，故本题选 C。

Question 28 B

听前预测：定位词为 sheet preparation。

题目解析：Douglas 说 “But I should be able to prepare some sheets and a list of questions that can be used during the focus group sessions”，故本题选 B。

Question 29 A

听前预测：定位词为 letter。

题目解析：Douglas 问 “Do you think we'll need to write a letter to send to the participants...”，Jane 回答 “I can take care of that”，故本题选 A。

Question 30 C

听前预测：定位词为 transcript。

题目解析：根据 “I forgot about the transcript. That’ll likely be a big job, so let’s do half each...” 可知，transcript 也是两人共同完成，故本题选 C。

SECTION 4

Good morning everyone! Today I’m going to talk about the graphical symbol. A graphic symbol is a written symbol that is used to represent speech, such as those used in the Greek alphabet. The term ‘graphic symbol’ encompasses anything from the logographs used in Egyptian hieroglyphic writing, to ancient Chinese pictograms. Early symbols were based on pictographs and ideograms before they were developed into logographic writing systems. These systems are still in use in some non-literate cultures in Africa, the Americas, and Oceania. Indeed, elements of pictography are still found in modern Chinese characters, and it is often an interesting exercise to trace the origins of some Chinese characters. Pictographs remain in common commercial use today as signs, instructions, or statistical diagrams. Road signs and public toilet signs, and even flat-pack assembly instructions utilising pictures are considered pictographic.

Ancient graphic writing systems provide researchers with a wealth of knowledge about past civilisations. In 1799, one of the most important historical discoveries was made by accident when members of Napoleon’s expedition to Egypt found a stone in Rosetta that exhibited three different scripts. The stone, now known as the Rosetta Stone, was studied in significant depth by scholars, and was first deciphered by Frenchman Jean-François Champollion in 1822. He was able to correctly determine the phonetic values of the symbols, and later research has confirmed his findings. In many of these symbols, lines are used to portray a multitude of meanings, and knowledge and understanding of these lines holds the key to comprehension of graphic writing systems.

A key moment in the history of communication was the invention of the camera obscura, or camera. Although the concept can be traced back to the fifth century

B.C. Chinese philosopher Mo Ti, the first photographic image was ultimately created in 1826 by Joseph Nicéphore Niépce. Photography, as it was later known, enables researchers to piece together and better understand history. Today, photography forms a huge part of everyday life and most publications contain a vast number of photographs. Photography is used in advertising, and is now becoming a way to increase awareness of existing world issues. For example, animal welfare charities are increasingly using photography to advertise animals that are at high risk of endangerment. Charity workers are sometimes flown to far-flung locations to document the suffering endured by high-risk animals in an attempt to raise human awareness of their consumption activities, and how they impact others. One recent high profile campaign was undertaken by attaching a camera to the foot of a bird, in order to obtain photographs of the animals in their natural habitats, and understand how often they come into contact with human waste. A soon-to-be-released documentary about the suffering of animals on Midway Island shows the full extent to which human consumption is harming animals thousands of miles from us.

Q34

Q35

Q36

As photography continues to progress, with the use of drones now becoming somewhat commonplace, we should expect more and more objects to be included in the future, expanding the horizon of photography ever further. Indeed, the downward pressure on traditional media prices means that media companies are being forced to get creative on how to make a profit. Many have found that the answer to this lies in advertising, and companies are now willing to devote a large portion of their budgets to advertising in newspapers. By the same token, marketing has become an essential part of a company's business model, often meaning the success or failure of a company. As a result, much time and money has been pumped into the development of effective branding, with attractive packaging playing a large role in this. However, many governments are now seen to be cracking down on marketing and packaging in an attempt to protect consumers from being misled. In particular, tobacco companies are now subject to ever increasing regulation. For example, in the United Kingdom, legislation is soon to pass preventing any form of branding or differentiation on cigarette packaging in efforts to curb the harmful effects of smoking.

Q37

Q38

Q39

Finally, one must not forget the fundamental role that graphic writing systems

have had to play in mathematics. Graphs, icons, and diagrams often form the very basis of these branches of academia. Indeed, one needs to look no further than chemistry's periodic table to see a perfect example of graphic writing systems in use today. Q40

SECTION 4 解析

Question 31 commercial

听前预测：定位词为 use today，此处应填形容词。

题目解析：本题依据“Pictographs remain in common commercial use today as signs...”作答，其中“Pictography”意为“象形文字”，本题应填 commercial。

Question 32 knowledge

听前预测：定位词为 past civilisations，此处应填名词。

题目解析：根据定位词定位至“Ancient graphic writing systems provide researchers with a wealth of knowledge about past civilisations. (古代象形书写体系为研究者提供了关于古代文明的大量信息)”，从而可知此处填 knowledge。

Question 33 lines

听前预测：定位词为 depict various meanings，此处应填名词。

题目解析：depict various meanings 在原文中的同义替换为 portray a multitude of meanings，所在原句为“lines are used to portray a multitude of meanings”，故本题填 lines。

Question 34 Photography

听前预测：定位词为 understand history better，此处应填名词。

题目解析：本题根据“Photography, as it was later known, enables researchers to piece together and better understand history”可知应填 Photography。

Question 35 advertise

听前预测：定位词为 charities，此处应填动词。

题目解析：根据“animal welfare charities are increasingly using photography to advertise animals that are at high risk of endangerment”可知，动物保护慈善机构越来越多地使用照片为濒临灭绝的动物做宣传，故本题答案为 advertise。

Question 36 foot

听前预测：定位词为 camera，此处应填名词。

题目解析：本题出题句为 “One recent high profile campaign was undertaken by attaching a camera to the foot of a bird”，attaching 为 tied 的同义替换，camera 要系在鸟的脚上，故本题填 foot。

Question 37 objects

听前预测：定位词为 be included，此处应填名词。

题目解析：定位至 “we should expect more and more objects to be included in the future”，由此可知，此处要填 objects。

Question 38 newspapers

听前预测：定位词为 Companies，此处应填名词。

题目解析：根据定位词找到 “...and companies are now willing to devote a large portion of their budgets to advertising in newspapers (公司现在愿意拿出一大部分预算用于在报纸上做宣传)”，故本题填 newspapers。

Question 39 packaging

听前预测：定位词为 effective branding，此处应填名词。

题目解析：本题出题句为 “As a result, much time and money has been pumped into the development of effective branding, with attractive packaging playing a large role in this. (为了品牌效应，人们投入了更多的时间和金钱，其中吸引人的包装发挥了很大的作用)”，这里 attractive 是 appealing 的同义替换，故本题应填 packaging。

Question 40 mathematics/math/maths

听前预测：定位词为 great importance，此处应填名词。

题目解析：本题题干中的 great importance 在原文中被同义替换为 fundamental，相应句子为 “one must not forget the fundamental role that graphic writing systems have had to play in mathematics. (不能忘了象形文字书写体系在数学中也曾起到重要作用)”，故答案为 mathematics/math/maths。

SECTION 1

OPERATOR: Hello, you have reached the complaints department. How can I help you?

JACK: Yes, hello there. I am phoning to make a complaint regarding a flight that I took with you recently.

OPERATOR: OK. There are some details I will need to take from you first. May I have your name please?

JACK: Jack Dawson. That's D-A-W-S-O-N. *Example*

OPERATOR: And your address?

JACK: It's 33 Hillcrest Road. That's H-I-double-L-C-R-E-S-T. *Q1*

OPERATOR: 33 Hillcrest Road. Is that in Exeter?

JACK: Yes.

OPERATOR: And what is the postcode of the residence?

JACK: It's AL698GQ. *Q2*

OPERATOR: Thank you. Do you have a telephone number?

JACK: Yes. The number at my office is 754688. *Q3*

OPERATOR: That's good, and may I just take a home phone number for you in case of emergencies?

JACK: No problem. It's 798662.

OPERATOR: Are they both local numbers?

JACK: Yes.

OPERATOR: OK great, thank you for your patience. Now what is the nature of your complaint?

JACK: I'm phoning to complain about a flight I took recently. I always take certain measures to ensure that I will be comfortable. For example, I always pay the additional cost for extra legroom and I always arrive punctually for the flight to make sure that I am seated beneath an air conditioner. Unfortunately I was disappointed to find that the air conditioning on the plane was broken, so I spent the entire flight in discomfort as it was too hot and the air was stuffy. *Q4*

OPERATOR: I see. I do apologise for this fault with the air conditioning. Now

while I have you on the phone, would you mind answering a short questionnaire regarding your recent flight?
Sure.

JACK:
OPERATOR:

OK, let's get started. What did you think of the food that was served to you during the flight?

JACK:

I thought that it was inexpensive and quite delicious. However I was still very hungry afterwards as it was a very small portion and more of a snack. Providing a snack for lunch is not reasonable.

Q5

OPERATOR:

OK, I have noted that down. What was your opinion of the quality of service that you received from our staff on-board?

JACK:

The staff were very helpful, but each time I pressed the button to request service it took a long time for a staff member to arrive. I found this frustrating as there just weren't enough staff on-board the flight to be able to serve all of the customers.

Q6

OPERATOR:

OK, that's great. Thank you very much for answering those questions. Are there any other parts of your travel experience that you would like to comment on?

JACK:

Yep. The process of moving through security was very quick and helped to make my travel experience stress-free.

Q7

OPERATOR:

Okay. Do you have any extra comments on the services you received during the flight?

JACK:

Yes, I thought that the seats were very uncomfortable and looked very old. They were also in need of repair as the reclined feature on my chair was broken so I could not go to sleep for the whole flight. Luckily the entertainment facilities were very good so I was able to distract myself by watching movies.

Q8

OPERATOR:

Thank you so much for taking the time to answer all of my questions, we would like to offer you some gifts as a goodwill gesture, with a 20% discount on the cost of your hotel stay. We also appreciate that international calls to your home country can be expensive and we are sure that you would like to keep your family updated on your travels, so please accept a phone card, which has a credit of £20.

Q9

JACK:

Oh that's really great. Thank you so much for the gifts!

OPERATOR:

No problem, we look forward to having you travel with us again soon! Have a fantastic vacation.

Q10

JACK:

Thanks! Bye!



SECTION 1 解析

Question 1 33 Hillcrest

听前预测：定位词为 Address，此处应填数字（门牌号）和路的名称。

题目解析：本题简单，听清数字，跟上录音中的字母拼写即可。

Question 2 AL698GQ

听前预测：定位词为 Postcode，此处应填数字和字母。

题目解析：本题考查数字和字母的听辨能力，跟上录音的节奏填写即可。

Question 3 754688

听前预测：定位词为 Telephone，此处应填数字。

题目解析：本题简单，根据录音，将所报数字逐一记下即可。

Question 4 C

听前预测：定位词为 complain about。

题目解析：根据“so I spent the entire flight in discomfort as it was too hot and the air was stuffy”可知，乘客抱怨机舱内太热，因此本题选 C。

Question 5 A

听前预测：定位词为 food served。

题目解析：本题比较好定位，由“I was still very hungry afterwards as it was a very small portion and more of a snack”可知，乘客嫌提供的食物分量太少，因此选 A。

Question 6 B

听前预测：定位词为 service of the staff。

题目解析：本题根据定位词定位至“The staff were very helpful, but each time I pressed the button to request service it took a long time for a staff member to arrive to arrive.”由此可知，需要服务时要等较长的时间 staff 才会来，故本题选 B。

Question 7 security

听前预测：定位词为 satisfied，此处应填名词。

题目解析：本题定位至“The process of moving through security was very quick and helped to make my travel experience stress-free”，然后抓取核心名词 security 作为本题答案。

Question 8 entertainment

听前预测：定位词为 facilities, distract from, 此处应填名词或形容词。

题目解析：本题定位至出题句“Luckily the entertainment facilities were very good so I was able to distract myself by watching movies”, 很容易得出答案 entertainment。

Question 9 hotel

听前预测：定位词为 gift, 此处应填名词。

题目解析：根据“we would like to offer you some gifts as a goodwill gesture, with a 20% discount on the cost of your hotel stay”便知，在酒店住宿上享有20%的折扣，故本题填 hotel。

Question 10 phone card

听前预测：定位词为 £20, 此处应填名词。

题目解析：£20 比较好定位，原句为“...so please accept a phone card, which has a credit of £20”，因此此处填 phone card。

SECTION 2

PRESENTER: Good morning, listeners! And welcome back to Star Radio!
Today on the show we have a visitor from Yazoo Car Rental who is going to give us an insight into his company and into the public transport system! Welcome Jonathan!

JONATHAN: Thank you for having me. Yes, I would like to start by introducing my company Yazoo Car Rental. We are the cheapest and most reliable rental company in the city and have won multiple awards for the quality of our services. This success did not come easily, however, and it proved important that we stay fresh and are always thinking of ways to attract new customers. Our first attempt to do this was to offer a free gift with every car rental, which we were confident the customers would be very interested in. The offer of a free Hoover with each rental, however, did not attract any new customers so we quite quickly stopped offering it.

Q11

In 2002, a new taxi company opened next door to us and we

started losing a lot of business to them, so we introduced an offer that we hoped might compete with their service. We offered a new package where you could rent a car with a driver for a small extra fee. By introducing this offer, we found that all of our customers preferred to drive the cars themselves, so again this offer was unsuccessful in attracting more customers. Q12

Learning from these mistakes, we decided to offer a package service where the customer no longer had to come to our offices to pick up the rental car. Instead we could drop off and pick up the car anywhere in the city to make the customer's experience a lot more stress free. This offer was very popular and increased our profits by 30%. Q13

In order to attract a younger demographic, we updated the models of cars that we offered for rental. We began offering more trendy cars such as minis and smart cars that we thought might appeal to the younger crowd and we also purchased them in more fun colours like reds and greens. This offer attracted some new customers of a younger age group, however not as many as we hoped. Q14

Next I decided to offer our services at a discounted price on our website where it could be seen by thousands of people. I thought that this could be a great way to attract a number of new customers who would never have heard of us before and it worked fantastically well. Following the success of the discount offer, we had so many customers that it became necessary to open a new branch of the company in the centre of the city. The cost of renting offices in the city centre was very high, so we hoped that our profits would justify this expensive decision. We made enough profit to keep our city centre offices open, but we had hoped for a greater increase in customer numbers. Q15 Q16

JONATHAN: Now for the second part of my talk, which is on the topic of

public transport. There are many benefits to public transport, for example, the recent introduction of bus lanes has meant that buses are now unaffected by traffic jams and are able to stay on schedule. Unfortunately, as fewer and fewer people are taking the bus nowadays, the service has become quite inefficient. This reduction in passengers may be due to the stories in the newspaper about the dangers posed to pedestrian safety by the buses, however this is largely untrue as buses are responsible for far less pedestrian-related accidents than cars. I use the bus service often, as car petrol is so expensive nowadays that the bus is far more affordable. However, if I am in a rush I prefer to take a taxi as they tend to get you to your destination very quickly so you can remain punctual for your appointments. I also very much enjoy flying to my destinations, as the service is incredibly fast and the airports are always very easy to find. Personally, my favourite mode of transportation is the bus. Due to the lack of people using the service I have found that the buses are never overcrowded so there is always a seat available. They are also never dirty as they get cleaned regularly. However, I have found that sometimes the bus can be over a half hour behind schedule which can be very frustrating. There has been a lot of fluctuation in the price of bus tickets in the last couple of years. In the past, £1.80 for a ticket was enough to sustain the bus companies, however, as the price of fuel increased so did the ticket prices. Now the ticket prices are declining as the bus companies try to encourage more people to use their service again.

Q17

Q18

Q19

Q20

Well, that's all from me today. Thank you for listening.

SECTION 2 解析

Question 11 C

听前预测：定位词为 free gift。

题目解析：本题出题句为 “The offer of a free Hoover with each rental, however, did not attract any

new customers so we quite quickly stopped offering it. (然而, 租车免费赠送吸尘器并没有吸引到新
的顾客, 因此我们很快就取消了这个活动)", 因此对应选项 C。

Question 12 C

听前预测: 定位词为 extra fee。

题目解析: 根据 "We offered a new package where you could rent a car with a driver for a small extra fee. By introducing this offer, we found that all of our customers preferred to drive the cars themselves..." 可知, a driver for a small extra fee 也不受欢迎, 因此对应选项 C。

Question 13 A

听前预测: 定位词为 package service。

题目解析: 根据 "...we decided to offer a package service..." 以及 "This offer was very popular and increased our profits by 30%" 可知 package service 广受欢迎, 因此对应选项 A。

Question 14 B

听前预测: 定位词为 updated car models。

题目解析: 通过听录音定位, 可知人们对 updated car models 的态度是 "This offer attracted some new customers of a younger age group, however not as many as we hoped." 即吸引了一些新顾客, 但并没有期望的那么多, 因此对应选项 B。

Question 15 A

听前预测: 定位词为 discount。

题目解析: 本题出题句为 "I thought that this could be a great way to attract a number of new customers who would never have heard of us before and it worked fantastically well." 从中可知 worked fantastically well (效果非常好), 因此对应选项 A。

Question 16 B

听前预测: 定位词为 new branch company。

题目解析: 关于 branch company, 录音中提到 "We made enough profit to keep our city centre offices open, but we had hoped for a greater increase in customer numbers." 从中可知, 虽然获得了足够多的利润, 但还是希望会有更多的顾客, 因此对应选项 B。

Question 17 C

听前预测: 定位词为 public transport。

题目解析: 谈及公共交通, 原文说 "Unfortunately, as fewer and fewer people are taking the bus nowadays, the service has become quite inefficient." 其中 inefficient 是 Low efficiency 的同义替换, 故本题选 C。

Question 18 B

听前预测: 定位词为 Buses, Taxis, Airplanes。

题目解析：本题题干中没有可用于定位的词，那么只能利用选项中的关键词来定位。出题句为“However, if I am in a rush I prefer to take a taxi as they tend to get you to your destination very quickly so you can remain punctual for your appointments. (然而，如果时间紧张，我会选择出租车，因为出租车可以很快地把我送达目的地，从而准时赴约)”，故本题选 B。

Question 19 A

听前预测：定位词为 bus。

题目解析：根据“I have found that sometimes the bus can be over a half hour behind schedule which can be very frustrating”可知，公交车有时候会迟来半个多小时，选项 A 的意思与此相符，故选 A。

Question 20 B

听前预测：定位词为 bus tickets。

题目解析：本题定位至“Now the ticket prices are declining as the bus companies try to encourage more people to use their service again.”从中可知票价下调了，因此选 B。

SECTION 3

ALEXANDRA: Excuse me, Dr Thompson. May I speak to you for a minute?

MR THOMPSON: Of course. Please come in.

ALEXANDRA: I'm Alexandra Jones. I'm studying Business here at the university and for my assignment I have to carry out a survey of people who own their own organisations. I heard that you are the founder of your own company, and I was wondering if I could ask you some questions about it.

MR THOMPSON: Yes, of course, please fire away.

ALEXANDRA: OK great, we'll get started! Did you encounter any problems whilst you were starting your company?

MR THOMPSON: Actually it was not as hard as I anticipated. I started out with very clear objectives, so I knew exactly what I wanted my corporate identity to be. It was very difficult to find the correct premises as the property market in London is so competitive, but eventually I found the perfect site. The hardest part was structuring the business, as I had no formal

Q21

ALEXANDRA: template so I had to create it myself.
MR THOMPSON: Yes, that is very impressive. Was it difficult dealing with staff?

ALEXANDRA: It's always tricky trying to satisfy a group of people with varying interests, however, I didn't encounter many problems. I found it very important to make the staff feel appreciated, so I hosted a staff day where we could all introduce ourselves and get to know each other as individuals. I was also able to talk to them about the type of work that they would be doing and gave them the opportunity to share with me the issues they had with the allocation of the work. Q22

ALEXANDRA: OK. Did you hire a management team or did you take on the role of the manager?

MR THOMPSON: Oh no, I already had enough tasks to take care of. I employed someone else to take on the role of the manager, however, he never consulted me before making decisions so I was forced to let him go and hire someone else. Q23

ALEXANDRA: And what did the other staff think of the new manager?

MR THOMPSON: They had a great deal of respect for him. It definitely helped that I consulted with them before hiring him. They were surprised that he has been so successful in his role at the company, despite the longer meeting hours. Q24

ALEXANDRA: Since the company opened, has it had any great achievements?

MR THOMPSON: There are many aspects of the company that I am pleased with, however, there is one achievement of which I am particularly proud. I wanted a mural painted to brighten up our entrance area, so I decided it would be a great idea to invite the local primary school to create one for us. The youngsters had a great time and I know they were thrilled to be included. Q25

ALEXANDRA: Oh, that's lovely.

ALEXANDRA: Have you encountered any major problems since you opened the company?

Q22 MR THOMPSON: Yes, we are always encountering issues with employment because it is very hard to find people who are qualified for the roles that we were offering, but unfortunately there is no solution to this. One of our administrators also recently left to go on maternity leave, which put us in a tricky situation, however, we have managed to find a temporary replacement for her. It's also now approaching the period when we must carry out our financial training so I need to find a venue with enough space to hold everyone. It will be interesting trying to organise that event!

Q26

ALEXANDRA: Oh gosh, I can imagine. I find it hard enough to organise myself!

MR THOMPSON: Organisation is a difficult thing to master, but it is also essential for success! Whilst I was learning how to stay organised, I realised that the role of motivation is essential.

Q27

ALEXANDRA: OK, that's great!

Q23 MR THOMPSON: I also suggest that you visit the library, as there is a section on culture that will have some very valuable material on how to develop your organisation skills.

Q28

ALEXANDRA: OK, I'll head to the library when we're finished.

Q24 MR THOMPSON: I think you will find it very useful. They also have a collection of documentaries on the subject of personal organisation and I suggest that you look up the literature on management of change. I personally found these sources incredibly useful. Articles are also a valuable resource and we have a whole collection of them in our university library. I advise that you look at Section 2 where you will find articles on the nature of volunteering.

Q29

Q30

ALEXANDRA: That's great, thank you so much for your help.

Q25 MR THOMPSON: No problem.

SECTION 3 解析

Question 21 B

听前预测：定位词为 most difficult problem。

题目解析：出题句为 “The hardest part was structuring the business, as I had no formal template so I had to create it myself”，其中 hardest part 为定位词 most difficult 的同义替换，因此本题选 B。

Question 22 B

听前预测：定位词为 unsatisfied。

题目解析：原文为 “...gave them the opportunity to share with me the issues they had with the allocation of the work.” 从中可看出不满意的是 allocation of the work (工作分配)，故本题选 B。

Question 23 C

听前预测：定位词为 problem, manager。

题目解析：根据 “I employed someone else to take on the role of the manager, however, he never consulted me before making decisions...” 可知 manager 的问题是在做决定前不跟他商量，故本题选 C。

Question 24 C

听前预测：定位词为 new manager。

题目解析：大家认为新的经理很成功，原文表述为 “They were surprised that he has been so successful in his role at the company, despite the longer meeting hours.” 故本题选 C。

Question 25 A

听前预测：定位词为 achievement。

题目解析：录音中说想要一个 mural (壁画) painted to brighten up our entrance area, 所以请来 local primary school 的孩子们来画，最后得到的结果是 “The youngsters had a great time and I know they were thrilled to be included.” 故本题选 A。

Question 26 solution

听前预测：定位词为 employment, 提示词为 no, 此处应填名词。

题目解析：定位至出题句 “...we are always encountering issues with employment because it is very hard to find people who are qualified for the roles that we were offering, but unfortunately there is no solution to this.” 从中可知对于 employment 中遇到的问题并没有解决办法，因此填 solution。

Question 27 role of motivation

听前预测：定位词为 staying organised, 此处应填名词。

题目解析：根据定位词定位至 “Whilst I was learning how to stay organised, I realised that the role of motivation is essential.” 其中 “essential” 意为 “至关重要的”，正好对应题目中的 great

importance, 故此处填 role of motivation.

Question 28 culture

听前预测：定位词为 in the library, 此处应填名词。

题目解析：根据定位词定位至 “I also suggest that you visit the library, as there is a section on culture that will have some very valuable material on how to develop your organisation skills. (我还建议你去看图书馆, 那里有一个关于文化的专区, 可以找到一些关于锻炼组织能力的有价值的资料)”, 从中可知此处填 culture。

Question 29 management of change

听前预测：定位词为 literature, 此处应填名词。

题目解析：定位到 “...look up the literature on management of change”, 直接得出答案 management of change。

Question 30 nature of volunteering

听前预测：定位词为 articles, 此处应填名词。

题目解析：定位到 “...where you will find articles on the nature of volunteering”, 便知此处需填 nature of volunteering。

SECTION 4

Welcome class to your very first lecture in this series on Architecture conducted by myself, Dr Torben Dahl. Today we will be looking into the relationship between climate and architecture, where I will be giving you a critical overview of the main climate influences that shape the design of buildings. Throughout this lecture series we will be looking at the latest research into climatic design carried out by experts in the field in addition to case studies and examples drawn from modernist practice both in cities and rural areas.

Q31

Now, acid rain is one of the climatic elements with the most devastating effects on our architecture. The chemicals in acid rain can cause paint to peel, corrosion of steel structures such as bridges, and erosion of stone statues. Since the 1970s, our government has been making great effort to reduce the release of these chemicals into the atmosphere with positive results. Private organisations have also been raising awareness and funds and recently received a huge donation

from the bank. It is interesting to look at the studies that have been carried out into the effects of acid rain at varying altitudes. Research has shown that there are lower levels of acid in the damaging pollutants at higher altitudes, meaning that skyscrapers are much less vulnerable to the negative effects as they are exposed to acid rain with far lower levels of damaging pollutants.

Q32

Recently, the Alter Project was founded to carry out further research into acid rain. This project is directed towards studying the effects of acid rain on old, traditional buildings of stone construction that are vulnerable to damage caused by acid rain. Masonry is particularly vulnerable as it is easily corroded and weakened by the acidic chemicals. It is imperative that we protect these buildings, as they are valuable examples of our history and culture.

Q33

Q34

Pollution is one of the main sources of concern in the present day. The construction industry contributes considerably as a source of pollution in its day-to-day processes of creating building materials such as concrete and glass, however, more new sustainable methods are being developed to counter this. A recent case study for this is Sky Tower, whose windows have been made from recycled glass to prevent pollution from the glass-making process.

Q35

Water is the most problematic element to be considered in construction. It is imperative that construction elements such as the insulation are fitted into the building in dry weather to prevent it from getting wet. This makes winter an undesirable season for construction as the heavy rainfall can have adverse effects on the building. Another climate type that has an enormous affect on buildings is humidity. Constructions made of steel and stone are largely unaffected by humidity, however, it can have a serious effect on wooden constructions if the timber has not been correctly treated. Moisture from the air can condense in the grain of the wood, which then swells and shrinks in proportion to the magnitude of change in its moisture content. This variation in size can have disastrous consequences.

Q36

Q37

In areas of the world that are prone to earthquakes, certain design and environmental conditions are preferable for protecting buildings in the event of a tremor. Engineers have come up with numerous building procedures to help minimise shaking in buildings. For example, tall buildings have height

restrictions and counterweights and multi-storey buildings have reinforced floors and walls. Ground conditions are a cause for worry in many constructions as often the soil is of the wrong density to protect the foundations.

Q38

Luckily technology has now been developed that can help to minimise damage by earthquakes. Seismic sensors can give prior warning when an earthquake is about to happen so that preparations can be made to protect both the people and the buildings from harm. The movement of building structures can now also be measured and monitored over time by architects. It has been expressed by architects within the design community that it would be valuable to be given special courses for designing buildings within earthquake zones. Guidelines are also expected to be produced by the government in the near future that will give architects a universal checklist to follow.

Q39

Q40

That wraps up the lecture for today. Please remember that attendance is mandatory... [fade out]

SECTION 4 解析

Question 31 cities

听前预测：定位词为 Cases and examples，提示词为 rural areas，此处应填名词。

题目解析：出题句为“Throughout this lecture series we will be looking at the latest research into climatic design carried out by experts in the field in addition to case studies and examples drawn from modernist practice both in cities and rural areas.”其中，“climatic design”意为“气候设计”，案例是从 cities and rural areas 的实践中获得的，因此此处填 cities。

Question 32 bank

听前预测：定位词为 Funds，此处应填名词。

题目解析：本题比较好定位，原文为“...funds and recently received a huge donation from the bank”，因此答案为 bank。

Question 33 Skyscrapers

听前预测：定位词为 lower levels of acid，此处应填名词。

题目解析：从录音中可知，所处位置越高受到酸腐蚀的程度越小，原文为“Research has

shown that there are lower levels of acid in the damaging pollutants at higher altitudes, meaning that skyscrapers are much less vulnerable to the negative effects as they are exposed to acid rain with far lower levels of damaging pollutants.” 根据题干，此处应填 Skyscrapers，由于在句首，注意首字母大写。

Question 34 stone

听前预测：定位词为 Alter Project，此处应填名词。

题目解析：定位至介绍 Alter Project 的部分，原文讲 “This project is directed towards studying the effects of acid rain on old, traditional buildings of stone construction...”，可知研究的是酸雨对传统石质建筑的影响，因此此处填 stone。

Question 35 Recycled glass

听前预测：定位词为 Sky Tower，此处应填名词。

题目解析：出题句为 “A recent case study for this is Sky Tower, whose windows have been made from recycled glass to prevent pollution from the glass-making process.” 从中可知，Sky Tower 上用 recycled glass 以防止在玻璃生产过程中产生污染，prevent 同义替换了题干中的 reduce 一词，本题填 Recycled glass，注意第一个单词首字母要大写。

Question 36 rainfall

听前预测：定位词为 winter，此处应填名词。

题目解析：冬天时会遇到的困难是 “This makes winter an undesirable season for construction as the heavy rainfall can have adverse effects on the building”，结合题目，rainfall 为所填内容。

Question 37 wooden

听前预测：定位词为 Humidity，此处应填形容词。

题目解析：Humidity (湿度) 对钢铁和石头建筑不会造成什么影响，但对于木质建筑的影响会很大，原文所述为 “Constructions made of steel and stone are largely unaffected by humidity, however, it can have a serious effect on wooden constructions if the timber has not been correctly treated.” 故此处填 wooden。

Question 38 soil

听前预测：定位词为 density，此处应填名词。

题目解析：根据 “Ground conditions are a cause for worry in many constructions as often the soil is of the wrong density to protect the foundations” 作答，土壤对地基是有影响的，尤其是密度不对的时候，故此处填 soil。

Question 39 movement

听前预测：定位词为 monitor，此处应填名词。

题目解析：原文讲 “The movement of building structures can now also be measured and monitored

over time by architects. (如今，建筑师能在一段时间内测量和监测建筑结构的运动)”，故本题填 movement。

Question 40 guidelines

听前预测：定位词为 government，此处应填名词。

题目解析：根据“Guidelines are also expected to be produced by the government in the near future that will give architects a universal checklist to follow”可知是希望政府出台一些准则供建筑师们遵守，故此处填 guidelines。



SECTION 1

AGENT : Hello, thank you for calling Iris Rentals. How can I help you?

CLIENT : Yes, hello there. I'm ringing just to make enquiries about renting a new property and I came across a listing on your website that I'm interested in.

AGENT : Oh yes.

CLIENT : I'd like to find out a few more details, if I may.

AGENT : Yes, of course. Can I take your name?

CLIENT : It's Mary Collins.

AGENT : Okay, Mary. I'm just searching our system for the property details. Is there any information in particular that you were wanting?

CLIENT : Does the house have a gym?

AGENT : No, the house doesn't have a gym, however the house has a large swimming pool, which will be great for exercise and really refreshing during summer. Q1

CLIENT : Oh wow, that sounds lovely. What is the general layout of the house?

AGENT : This house is rather unusual as the living room is located upstairs with the bedrooms, and downstairs at ground floor is the dining room, which has a lovely view out over the swimming pool. Q2

CLIENT : Does the house come with a car parking space on the street?

AGENT : Oh, there's no need for that. The house comes with a big garage where you can park your cars and there's also a lot of room for storage. It's attached to the house through a door in the kitchen. Q3

CLIENT : Oh, that's perfect, it'll make it far easier to carry my food shopping into the house.

AGENT : Oh yes, absolutely. You actually don't even need to take your car to do the shopping as the local supermarket is just down the street. You can walk the distance easily. Q4

CLIENT : Really? How convenient! Is there anywhere near to the house where I can take my children to play?

AGENT : Unfortunately there aren't any playgrounds nearby, but there is a park near the supermarket that would be great for taking your Q5

Example

CLIENT : OK

AGENT : Th

CLIENT : Do

AGENT : T

CLIENT : T

AGENT : i

CLIENT : T

AGENT : r

CLIENT : T

AGENT : A

CLIENT : T

AGENT : A

CLIENT : T

AGENT : A

CLIENT : T

AGENT : A

CLIENT : T

AGENT : A

CLIENT : T

AGENT : A

children for a walk. It would also be a great place for you to meet your neighbours.

CLIENT : Yes, that's true, I love taking long walks in the park. I'm sure there will be a playground at the local school anyway.

AGENT : Yes, absolutely. The community has its own primary school and there is a secondary school in the neighbouring community, so there are plenty of resources nearby for your children's education.

Q6

CLIENT : OK, great. What are the rental costs for the property?

AGENT : The monthly rent is \$980, which is very reasonable considering the size of the house and the amenities that it has to offer.

CLIENT : Does that figure include maintenance fees and bills?

AGENT : The bills are not included in that figure, but it does include any maintenance fees for the garden.

Q7

CLIENT : That sounds like a very reasonable price. We were hoping to move in on the 20th of April. Will the house be vacant for that date?

AGENT : The current tenants of the property are due to leave on the 20th, but the cleaners will need a few days to make sure that the house is clean and tidy. This would make the house officially available on the 23rd April.

Q8

CLIENT : Well everything about the house sounds perfect...exactly what I'm looking for. What date would it be possible to view the property?

AGENT : I have arranged for the tenant to leave the property on Friday so I can show the house to prospective renters. Would you be able to make that day?

CLIENT : Yes, I'm sure I could come on my lunch break. Would 1 o'clock be OK?

AGENT : I'm afraid that I have a meeting at 12.30, so I won't be able to make that time. I have available appointments at 10.15 and 3.

CLIENT : OK, in that case can we schedule the appointment for 10.15?

Q9

AGENT : No problem, I'll book it into my schedule. If you wouldn't mind arriving 5 minutes early that would be great, just so we can get started on time.

CLIENT : Sure. What is the address?

AGENT : The postcode is GA58ER and the house is number 8 on Spring Street. It's the second right off of Bath Street.

Q10

CLIENT : OK, that's great.
AGENT : Do you have any more questions?
CLIENT : Nope...thank you for your help.
AGENT : No problem. See you on Friday. Bye!



SECTION 1 解析

Question 1 swimming pool

听前预测：定位词为 Facility，此处应填名词。

题目解析：由 “No, the house doesn't have a gym, however the house has a large swimming pool, which will be great for exercise and really refreshing during summer” 可知，available 的设施为 swimming pool。

Question 2 dining room

听前预测：定位词为 bedrooms, downstairs，此处应填名词（房间）。

题目解析：本题考查几个主要房间所处的位置，定位至 “This house is rather unusual as the living room is located upstairs with the bedrooms, and downstairs at ground floor is the dining room...” 其中 upstairs 和 downstairs 是一对反义词（楼上、楼下），dining room 位于楼下，为此处答案。

Question 3 garage

听前预测：定位词为 Car park，此处应填名词。

题目解析：介绍到停车问题时，原文提及 “The house comes with a big garage where you can park your cars...”，由此可知此处填 garage。

Question 4 local supermarket

听前预测：定位词为 Shopping，此处应填名词。

题目解析：此处购物很方便，因为 “You actually don't even need to take your car to do the shopping as the local supermarket is just down the street.” 故本题答案为 local supermarket。

Question 5 park

听前预测：定位词为 Place for children playing，此处应填名词。

题目解析：本题定位至 “Unfortunately there aren't any playgrounds nearby, but there is a park near the supermarket that would be great for taking your children for a walk. (很遗憾附近没有运动场，但超市旁有一个公园，是带孩子散步的好去处)”，因此本题填 park。

Question 6 primary school

听前预测：定位词为 Education resources，提示词为 in the community，此处应填名词。

题目解析：本题依据“The community has its own primary school and there is a secondary school in the neighbouring community”可知，此社区的教育资源是 primary school。

Question 7 garden

听前预测：定位词为 maintenance fees，此处应填名词。

题目解析：客户问到了 bill 和 maintenance fees 的问题，得到的回答是“The bills are not included in that figure, but it does include any maintenance fees for the garden.”从而得知此处填 garden。

Question 8 23(rd) April

听前预测：定位词为 Date, available, 此处应填日期。

题目解析：录音中出现了两个日期。客户说想 20th April 搬入，但被告知上一家住户会在那时搬走，而打扫房屋还需两天，所以最终能搬入的日期是 23(rd) April。

Question 9 10.15

听前预测：定位词为 Viewing arrangement, 此处应填时间。

题目解析：有关 viewing arrangement, 原文中说的是“view the property”，根据一番商量，最终确定的是“OK, in that case can we schedule the appointment for 10.15?” “No, problem...” 故填 10.15。

Question 10 Spring Street

听前预测：定位词为 Address, 此处应填街道名称。

题目解析：根据“The postcode is GA58ER and the house is number 8 on Spring Street”可知，此处需填入的是 Spring Street。

SECTION 2

Good morning everybody and welcome to the Australian Wild Zoo. I would like to start by introducing you to the new features that we have added to our zoo in the recent renovation. Being the only zoo in the area, we receive thousands of visitors a year. We found that this huge footfall was too demanding for the facilities that we were able to provide, and so we decided to expand ourselves in order to give every visitor a brilliant and exciting experience. We initially intended to build a new dog-walking area, however we felt that the zoo should

cater only to exotic animals. During our previous renovation we expanded the exhibition centre and so we felt that this time the zoo would benefit most from introducing a new batch of animals, so visitors can now see a whole range of new additions at the Australian Wild Zoo, including lions and bears.

Q11

With this huge improvement to our facilities, we also found it necessary to change our regulations, which we put into action in June. We now allow visitors access to the zoo during weekdays and, as some of our newly added animals are nocturnal, guests may also now visit the animals late at night. Unfortunately some visitors had started feeding the animals during these late night viewing times, which disrupted their feeding pattern and as a result we had to ban food in the viewing areas.

Q12

One of our most exciting additions to the zoo is our native kangaroo, who we have named Frisbee. For a fee of just \$5, visitors can have their photo taken with him and have it printed onto a selection of items such as key rings and mugs. At first, visitors were also allowed to feed Frisbee items that we provided, such as carrots and leaves, however some guests started feeding him hamburgers and chips so we were forced to forbid visitors from feeding him. As kangaroos are such calm animals, Frisbee isn't disturbed by the noises and shouting of visitors at the zoo, which has helped him to settle in at his new home very quickly.

Q13

The pye-dog zone has been permanently closed throughout the winter period to allow the dogs to hibernate as they would in their natural habitat. We were very excited to be reopening the zone, however unfortunately we have been forced to close it temporarily as the result of a broken fence, which will take about one week to fix. We were intending to renovate the zone with the other constructions that we were undertaking, but unfortunately we did not have sufficient funds. We understand that this temporary closure may disappoint our visitors, and so we have decided to offer a discounted price on our tickets for the next week. If you ask at the reception desk, they will happily direct you to the photo shop where you can purchase the ticket. The ticket will also entitle you to a 10% discount off any item in our gift shop where we sell a range of items including postcards and fluffy toys.

Q14

Q15

Now we're currently standing at the gate, which is marked with the arrow

on the map. Now if any of you need to visit the toilets before we get started, they're right here to our left. Out to the east, just across the grass, there is the bird hide where we have over one hundred species of birds for you to watch. We even have an interactive zone where you can feed them with seed and take photographs with our parrots! What a great souvenir to remember your trip! And up the path to the north, if you look in front of you now, there is the pye-dog zone. Although it is closed, if any of the dogs are playing outside, you will be able to see them through the fence. And then let's pass by the refuge. This area is a sheltered part for Brolga watchers who can use it to spy through binoculars. And after that, I suggest that you all visit the rest area for some cold drinks and snacks as it is very hot outside. It is just at the northwest corner of the zoo. After that you could cut across the path to the large rectangular hut where you will be able to see our new addition of fierce lions. The mother has just had cubs, so it is really quite a rare thing to see! And around to the west, for those of you who want to visit Frisbee, our native kangaroo, he is in the circular shaped hut just up the path to the left. Don't forget to have your photo taken with him! Now, as I mentioned before, you can purchase your discounted tickets at the photo shop and this is also where you will come to collect any photos you have had taken at the zoo during your visit. The photo shop is located at the southwest corner of the zoo. Okay, ladies and gentlemen, enjoy your visit.

Q16

Q17

Q18

Q19

Q20

SECTION 2 解析

Question 11 B

听前预测：定位词为 new improvement。

题目解析：迅速浏览三个选项，A 建了新遛狗场，B 新购入一批动物，C 扩大了展览场地。通过听录音发现 “so we felt that this time the zoo would benefit most from introducing a new batch of animals”，故本题选 B。

Question 12 C

听前预测：定位词为 change for the new regulation。

题目解析：本题题干中的 enacted 在原文中的同义替换为 put into action，意为“生效，实施”，接着听下去为出题句 “We now allow visitors access to the zoo during weekdays and, as some of our newly added animals are nocturnal, guests may also now visit the animals late at night.” 其中

“nocturnal”意为“夜行的”。因为新加入了夜行动物，所以游客晚上也可以参观，故选C。

Question 13 C

听前预测：定位词为 kangaroo。

题目解析：本题考查的是参观袋鼠时不允许做什么，文中提及“however some guests started feeding him hamburgers and chips so we were forced to forbid visitors from feeding him”，故本题选C。

Question 14 A

听前预测：定位词为 pye-dog zone。

题目解析：讲到 pye-dog zone (野狗区) 时说，为了让其冬眠，此区域冬天会关闭，现在不得不临时关闭的原因是“unfortunately we have been forced to close it temporarily as the result of a broken fence”，故选A。

Question 15 B

听前预测：定位词为 discounted ticket。

题目解析：此题根据“...they will happily direct you to the photo shop where you can purchase the ticket...”可知，photo shop 里有打折的门票，故本题选B。

Question 16 G

听前预测：定位词为 Bird hide。

题目解析：根据“Out to the east, just across the grass, there is the bird hide (向东走，穿过草坪，有个观鸟处)”，可知 Bird hide 对应的是地图中的G。

Question 17 B

听前预测：定位词为 Pye-dog zone。

题目解析：根据“And up the path to the north, if you look in front of you now, there is the pye-dog zone (小径的北方，前方正对着你的是野狗区)”，可知 Pye-dog zone 对应的是地图中的B。

Question 18 A

听前预测：定位词为 Rest area。

题目解析：根据定位词定位至“It is just at the northwest corner of the zoo”，可知 Rest area 对应的是地图中的A。

Question 19 F

听前预测：定位词为 Kangaroo visiting site。

题目解析：根据“And around to the west, for those of you who want to visit Frisbee, our native kangaroo, he is in the circular shaped hut just up the path to the left. (想看我们本土的袋鼠 Frisbee 的，请向西边走，它在道路左侧圆形的小屋里)”，可知 Kangaroo visiting site 对应的是地图中的F。

Question 20 D

听前预测：定位词为 Photo shop。

题目解析：根据“The photo shop is located at the southwest corner of the zoo. (照片商店位于动物园的西南角)”可知 Photo shop 对应的是地图中的 D。

SECTION 3

JONES: Hello, Mr Thompson. May I speak to you for a minute?

MR THOMPSON: Of course. Please come in.

JONES: I'm Alexandra Jones. I'm studying Sustainability here at the university and I heard about the summer course that you offer every year. I was considering joining the course and wanted to ask you some questions about it.

MR THOMPSON: Yes, of course, please fire away.

JONES: Has the course been effective in improving the environment?

MR THOMPSON: Yes, absolutely. We have seen great results. Last year we planted a small field of trees and we have been measuring their oxygen outputs to see the benefits that they have provided to the environment. Since we were regulated by law last month, we are now able to hugely enhance our efforts. Our current goal is to introduce a lot more tree species to the plot so that we can establish a complex habitat and compare the benefits of each species. In order to do this we need to get a lot more students involved in the project, so I am very pleased to hear about your interest. Q21

JONES: Well, the project sounds fascinating. I would definitely like to be involved.

MR THOMPSON: Absolutely. Over the years we have received funding from private investors and from selling shares, but the biggest improvement in our research came from a government fund that we received in the first year. This has greatly improved the organisation and we have since won prizes for our research. Q22

JONES: Wow, how impressive!

MR THOMPSON: Yes, it is of the utmost importance to our organisation that we find a way to repair the terrible damage that has been done to the environment by the human species. This is no small undertaking and our resources still need management, but from reports taken of our studies we have found that teachers and students have greatly benefitted from field trips to the tree plantation.

Q23

JONES: Yes, I visited the plantation myself on a field trip two years ago and I found myself greatly impressed by it.

MR THOMPSON: We have received a lot of feedback from visiting groups telling us how impressed teachers, researchers and students alike have been during their visits. Due to the educational facilities that we have carefully structured, I know that the visits are useful and engaging for students and that their experience is particularly special.

Q24

JONES: So what is the particular focus of the organisation and the reports that it provides?

MR THOMPSON: I am personally very interested in soil erosion, so I knew that I definitely wanted to focus some of the report on this area. Before I set up the organisation, I looked up information on what areas were currently being researched and I found that there were already studies into air pollution and water pollution. I obviously wanted to find a unique area to research and so these were no good. I was tempted to look into the background of overgrazing, but the impacts of forest exploitation are far more devastating and very little research has been carried out on this subject, so I decided that this should also form some focus for the report.

Q25

Q26

JONES: Yes, that makes sense. What have you found to be the greatest benefits of the activities carried out by the organisation?

MR THOMPSON: I have found that the greatest benefits are not the ones that anyone can learn from a book, like how to collect data,

but more importantly are life lessons that one can gain only from experience. Students who have partaken in the summer course have massively enhanced their confidence, which will prove invaluable for the rest of their lifetime. The people who partake in the summer course already know the importance of environmental protection, so it is not important that we spend time teaching them this. Students instead benefit from learning the importance of punctuality, as each day they have to wake up early to make sure that they are not late for their practical experience sessions.

Q27

Q28

JONES:

If I decide to attend the summer course, what will I be doing for the rest of the time when no activities are going on?

MR THOMPSON:

Well, we unfortunately don't yet have a library on site, so you would be unable to read reference books although you are obviously welcome to bring some books of your own with you. We offer a range of fun hobbies, such as games and painting, for students to participate in outside of their classes so you could participate in one of these activities.

Q29

We do not offer tutorials outside of the scheduled classes, however you are free to interview teachers and ask them any questions you may have about the research.

Q30

JONES:

Well, the course sounds fantastic. I would definitely like to participate during the summer. Thank you so much for your help.

MR THOMPSON: No problem at all, here is a form with all of the details. I look forward to seeing you there.

SECTION 3 解析

Question 21 A

听前预测：定位词为 improved the environment。

题目解析：本题的定位词 improved 在原文中被同义替换为 enhance，原句为 "Since we were

regulated by law last month, we are now able to hugely enhance our efforts.” 故本题选 A。



Question 22 C

听前预测：定位词为 biggest reason, improved greatly。

题目解析：本题比较好定位，根据“but the biggest improvement in our research came from a government fund that we received in the first year” 便可知，此题选 C。

Question 23 B

听前预测：定位词为 reports。

题目解析：本题比较容易，答案与原文基本保持一致，定位至“but from reports taken of our studies we have found that teachers and students have greatly benefitted from field trips to the tree plantation.” 从中可直接选出答案 B。

Question 24 A

听前预测：定位词为 obtain the special experience。

题目解析：本题出题句为“Due to the educational facilities that we have carefully structured, I know that the visits are useful and engaging for students and that their experience is particularly special.” 从中可知，此活动对学生来说有特别意义，故本题选 A。

Questions 25-26 B & D (IN EITHER ORDER)

听前预测：定位词为 focus on。

题目解析：原文中说“I am personally very interested in soil erosion, so I knew that I definitely wanted to focus some of the report on this area”，因此报告要研究的有 soil erosion，选 B。定位至第二处“but the impacts of forest exploitation are far more devastating and very little research has been carried out on this subject, so I decided that this should also form some focus for the report”，可知 forest exploitation（森林开采）方面的研究也将成为报告中的一个关注点，故选 D。

Questions 27-28 A & B (IN EITHER ORDER)

听前预测：定位词为 benefits of this activity。

题目解析：根据原文“Students who have partaken in the summer course have massively enhanced their confidence（参加夏季课程的学生在自信心方面有很大的提升）”，可知其中的好处之一是增强自信，选 B。后面还说“each day they have to wake up early to make sure that they are not late for their practical experience sessions（他们每天不得不早点起床，为的是上实践课不迟到）”，也就是说学生变得更准时了，因此选 A。

Questions 29-30 C & D (IN EITHER ORDER)

听前预测：定位词为 the rest of time when no activities。

题目解析：对于女生提出的问题“...what will I be doing for the rest of the time when no activities are going on?” 得到的回答是“Well, we unfortunately don't yet have a library on site, so you would

be unable to read reference books... We offer a range of fun hobbies, ...so you could participate in one of these activities... however you are free to interview teachers.” 从而可知，没有图书馆，无法阅读参考书，因此 A 和 B 两项不选，可以参加自己感兴趣的活动 (fun hobbies)，故选 D，还可以做的就是采访一些老师，故选 C。

SECTION 4

Good morning. In the last few lectures I've been talking about the history of technology in the modern world. But today I want to use Roberts as our case study, which is a company that develops complex camera technology for a range of industries and disciplines. Since the camera was invented in 1816, it has changed and improved dramatically with cameras now in existence that can fit on the head of a pin. The company has been founded on a series of principals by which the company operates in its day-to-day business, the most important of these being to enhance the present development of camera technology.

Q31

Roberts has a philosophy pioneering and innovation, having been responsible for the invention of numerous technologies since it was founded by Dwayne Roberts in 1957. It has achieved many of its aims over the years, but its principal and founding aim persists through time, which is to explore new facts and imagine the unimaginable.

Q32

The cameras produced by Roberts have a multitude of potential applications that are currently being explored. One of these is an anti-gravity camera that they aim to attach to a space satellite from where it will record live, high-definition video and provide fascinating new views of planet earth. It could also prove useful in exploring other planets by providing researchers with never before seen images of the universe. Roberts are also experimenting with attaching the cameras to small drones that will fly through the rainforest in search of plants that could be used to develop future medicine. The camera also has the potential to be used on the roads. As it is 20% cheaper than the speed cameras that are currently in operation, this means that more of them could be distributed across the road network where they can control traffic by making sure that all cars abide by the speed regulations.

Q33

Q34

Q35

Despite this diverse range of potential applications, the cameras are presently used for very different, more domestic purposes. Roberts' cameras are presently used as nanny-cams, which allow parents to watch their nannies to ensure that they are responsibly attending to the children that they have been employed to care for. These cameras give parents peace of mind and more control over their child's welfare whilst they are at work or otherwise occupied. The highest sales of the company are in toys that have the cameras hidden within them. This clever idea means that the cameras are camouflaged from view and do not look out of place in the child's nursery. The toys are also very robust, so children can play with them without damaging them in the process. The toys are designed to look like animals and come in a range of shapes, sizes and colours as well as different animal species such as monkeys and bears. These toys are incredibly popular and can be bought in any toy store for only \$20. Always eager to be constantly improving their products, Roberts are now working on a product that will change the way people see photography. This new contraption is a mini camera that is built into eyewear such as glasses and sunglasses where it can capture the world as you see it. Holiday makers and tourists no longer have to carry a big, heavy camera around with them on their travels! They can instead purchase a set of eyewear with the built-in camera, which will capture the moment with a simple tap.

Q36

Q37

Q38

Roberts are also developing a model of this tiny camera for use during medical procedures and operations. The camera will be used during non-invasive keyhole surgeries to enable the surgeon to see what they are doing inside the body without having to make a large incision. This innovative application for the camera could make surgeries a lot faster and the saved time and energy will also make it far more efficient. As the patient will no longer have to undergo a large incision for their surgery, it also means that their recovery will be much faster with a greatly reduced chance of post-op infection.

Q39

If any of you have an interest in working in this field of technological invention, Roberts is a very diverse and fast-growing company that would be a fantastic internship opportunity. Every year they organise a series of competitions where entrants stand the chance of winning a place in their internship programme, so I would suggest that all of you enter.

Q40

That wraps up the lecture for today. Please remember that attendance is mandatory... [fade out]

SECTION 4 解析

Question 31 present

听前预测：定位词为 the most important principal，提示词为 improve，此处应填名词或形容词。

题目解析：本题出题句为“The company has been founded on a series of principals by which the company operates in its day-to-day business, the most important of these being to enhance the present development of camera technology.”其中 enhance（促进）在题干中被同义替换为 improve，本题答案为 present。

Question 32 new facts

听前预测：定位词为 Dwayne Roberts, 1957，提示词为 explore，此处应填名词。

题目解析：原文讲“It has achieved many of its aims over the years, but its principal and funding aim persists through time, which is to explore new facts and imagine the unimaginable.”始终保持不变的 aim 是 explore new facts，故此空填 new facts。

Question 33 other planets

听前预测：定位词为 Potential applications，提示词为 discovering，此处应填名词。

题目解析：此处 discovering 的同义替换为 exploring，原文为“It could also prove useful in exploring other planets by providing researchers with never before seen images of the universe. (同时证明，它在为研究人员探索其他星球、提供从未见过的宇宙图像方面十分有用)”，可知此处填 other planets。

Question 34 future medicine

听前预测：定位词为 plants in the rainforest，此处应填名词。

题目解析：本题根据“Roberts are also experimenting with attaching the cameras to small drones that will fly through the rainforest in search of plants that could be used to develop future medicine”作答，把相机安装在遥控飞机上，穿越热带雨林寻找可以用于新药研发的植物，故此处填 future medicine。

Question 35 traffic

听前预测：定位词为 road network，此处应填名词。

题目解析：本题比较好定位，题干与原文基本保持一致，根据“this means that more of them could be distributed across the road network where they can control traffic...”可知，此处填 traffic。

Question 36 Toys

听前预测：定位词为 best sellers，此处应填名词（复数）。

题目解析：录音中说公司的玩具最畅销，原文为“The highest sales of the company are in toys that have the cameras hidden within them”，故本题填 Toys，注意首字母要大写。

Question 37 animals

听前预测：定位词为 designed to look like，此处应填名词。

题目解析：本题直接定位至“The toys are designed to look like animals...”，得知答案应为 animals。

Question 38 camera

听前预测：定位词为 change the way, photography，此处应填名词。

题目解析：文中先说了一个相关产品可以 change the way people see photography，接着对其进行了解释“This new contraption is a mini camera that is built into eyewear such as glasses and sunglasses...（这种新奇的装置是安装在眼镜和太阳镜上的微型照相机）”，因此 camera 即为答案。

Question 39 efficient

听前预测：定位词为 Surgeries，此处应填形容词。

题目解析：为外科手术带来的好处有“This innovative application for the camera could make surgeries a lot faster and the saved time and energy will also make it far more efficient”，因此此处需填 efficient。

Question 40 competitions

听前预测：定位词为 Internship opportunity，此处应填名词。

题目解析：出题句为“Every year they organise a series of competitions where entrants stand the chance of winning a place in their internship programme, so I would suggest that all of you enter.”从中可知，参加该公司组织的一系列竞赛将有机会获得在该公司实习的名额，故此处填 competitions。

Answer Keys



TEST 1

Each question correctly answered scores 1 mark. **CORRECT SPELLING IS NEEDED IN ALL ANSWERS.**

SECTION 1, Questions 1-10

- 1 19
- 2 40/forty minutes
- 3 balcony
- 4 tennis courts
- 5 fish dishes
- 6 piano
- 7 helicopter
- 8 (Cretan) garden
- 9 fireworks
- 10 cable car

SECTION 3, Questions 21-30

- 21 B
- 22 C
- 23 B
- 24 C
- 25 B
- 26 A
- 27 A
- 28 D
- 29 B
- 30 E

SECTION 2, Questions 11-20

- 11 B
- 12 C
- 13 B
- 14 A

15&16 IN EITHER ORDER

- A
C
- 17 popular
 - 18 taste
 - 19 feedback
 - 20 speed

SECTION 4, Questions 31-40

- 31 genetic
- 32 observation
- 33 tools
- 34 open
- 35 stone
- 36 symbols
- 37 river
- 38 density

39&40 IN EITHER ORDER

- B
C

If you score...

0-11	12-27	28-40
you are unlikely to get an acceptable score under examination conditions and we recommend that you spend a lot of time improving your English before you take IELTS.	you may get an acceptable score under examination conditions but we recommend that you think about having more practice or lessons before you take IELTS.	you are likely to get an acceptable score under examination conditions but remember that different institutions will find different scores acceptable.

TEST 2

Each question correctly answered scores 1 mark. **CORRECT SPELLING IS NEEDED IN ALL ANSWERS.**

SECTION 1, Questions 1-10

- 1 July
- 2 3/three days
- 3 test driving
- 4 camera
- 5 110
- 6 Edgeworth
- 7 Summer
- 8 city centre/center
- 9 directions
- 10 (enquiring) online

SECTION 2, Questions 11-20

- 11 C
- 12 A
- 13 B
- 14 C
- 15 A
- 16 F
- 17 H
- 18 A
- 19 D
- 20 C

SECTION 3, Questions 21-30

- 21 A
- 22 B
- 23 F
- 24 G
- 25 D
- 26 A
- 27 C

28-30 **IN ANY ORDER**

- B
E
F

SECTION 4, Questions 31-40

31&32 **IN EITHER ORDER**

- C
D
- 33 parents
 - 34 versions
 - 35 country
 - 36 transport
 - 37 social
 - 38 funding
 - 39 Competitions
 - 40 professional

If you score...

0-11	12-27	28-40
you are unlikely to get an acceptable score under examination conditions and we recommend that you spend a lot of time improving your English before you take IELTS.	you may get an acceptable score under examination conditions but we recommend that you think about having more practice or lessons before you take IELTS.	you are likely to get an acceptable score under examination conditions but remember that different institutions will find different scores acceptable.

TEST 3

Each question correctly answered scores 1 mark. **CORRECT SPELLING IS NEEDED IN ALL ANSWERS.**

SECTION 1, Questions 1-10

- 1 67 King's
- 2 north
- 3 Sutcliffe
- 4 automatic
- 5 day
- 6 weather
- 7 license
- 8 50
- 9 30
- 10 diary

SECTION 3, Questions 21-30

- 21 A
- 22 B
- 23 A
- 24 C
- 25 C
- 26 E
- 27 A
- 28 B
- 29 D
- 30 C

SECTION 2, Questions 11-20

- 11 1 million
- 12 tourism
- 13 southeast/south-east
- 14 lawyer
- 15 7/seven
- 16 A
- 17 C
- 18 E
- 19 D
- 20 B

SECTION 4, Questions 31-40

- 31 democratic
- 32 internal website
- 33 transparency
- 34 (company's) income
- 35 employee first
- 36 solution
- 37 promotion
- 38 ticket
- 39 vacation
- 40 ban

If you score...

0-11	12-27	28-40
you are unlikely to get an acceptable score under examination conditions and we recommend that you spend a lot of time improving your English before you take IELTS.	you may get an acceptable score under examination conditions but we recommend that you think about having more practice or lessons before you take IELTS.	you are likely to get an acceptable score under examination conditions but remember that different institutions will find different scores acceptable.

TEST 4

Each question correctly answered scores 1 mark. **CORRECT SPELLING IS NEEDED IN ALL ANSWERS.**

SECTION 1, Questions 1-10

- 1 Receptionist
- 2 (quality) customer
- 3 early mornings
- 4 training
- 5 Driver
- 6 flexible
- 7 grocery shopping
- 8 weekends
- 9 cinema
- 10 bookings

SECTION 3, Questions 21-30

- 21 A
- 22 C
- 23 B
- 24 B
- 25 C
- 26 A
- 27 C
- 28 B
- 29 A
- 30 C

SECTION 2, Questions 11-20

- 11 C
- 12 B
- 13 A
- 14 A
- 15 registration office
- 16 records
- 17 identity
- 18 acknowledgement
- 19 interview
- 20 decision

SECTION 4, Questions 31-40

- 31 commercial
- 32 knowledge
- 33 lines
- 34 Photography
- 35 advertise
- 36 foot
- 37 objects
- 38 newspapers
- 39 packaging
- 40 mathematics/math/maths

If you score...

0-11	12-27	28-40
you are unlikely to get an acceptable score under examination conditions and we recommend that you spend a lot of time improving your English before you take IELTS.	you may get an acceptable score under examination conditions but we recommend that you think about having more practice or lessons before you take IELTS.	you are likely to get an acceptable score under examination conditions but remember that different institutions will find different scores acceptable.

TEST 5

Each question correctly answered scores 1 mark. **CORRECT SPELLING IS NEEDED IN ALL ANSWERS.**

SECTION 1, Questions 1-10

- 1 33 Hillcrest
- 2 AL698GQ
- 3 754688
- 4 C
- 5 A
- 6 B
- 7 security
- 8 entertainment
- 9 hotel
- 10 phone card

SECTION 3, Questions 21-30

- 21 B
- 22 B
- 23 C
- 24 C
- 25 A
- 26 solution
- 27 role of motivation
- 28 culture
- 29 management of change
- 30 nature of volunteering

SECTION 2, Questions 11-20

- 11 C
- 12 C
- 13 A
- 14 B
- 15 A
- 16 B
- 17 C
- 18 B
- 19 A
- 20 B

SECTION 4, Questions 31-40

- 31 cities
- 32 bank
- 33 Skyscrapers
- 34 stone
- 35 Recycled glass
- 36 rainfall
- 37 wooden
- 38 soil
- 39 movement
- 40 guidelines

If you score...

0-11	12-27	28-40
you are unlikely to get an acceptable score under examination conditions and we recommend that you spend a lot of time improving your English before you take IELTS.	you may get an acceptable score under examination conditions but we recommend that you think about having more practice or lessons before you take IELTS.	you are likely to get an acceptable score under examination conditions but remember that different institutions will find different scores acceptable.

TEST 6

Each question correctly answered scores 1 mark. **CORRECT SPELLING IS NEEDED IN ALL ANSWERS.**

SECTION 1, Questions 1-10

- 1 swimming pool
- 2 dining room
- 3 garage
- 4 local supermarket
- 5 park
- 6 primary school
- 7 garden
- 8 23(rd) April
- 9 10.15
- 10 Spring Street

SECTION 2, Questions 11-20

- 11 B
- 12 C
- 13 C
- 14 A
- 15 B
- 16 G
- 17 B
- 18 A
- 19 F
- 20 D

SECTION 3, Questions 21-30

- 21 A
- 22 C
- 23 B
- 24 A
- 25&26 IN EITHER ORDER
B
D
- 27&28 IN EITHER ORDER
A
B
- 29&30 IN EITHER ORDER
C
D

SECTION 4, Questions 31-40

- 31 present
- 32 new facts
- 33 other planets
- 34 future medicine
- 35 traffic
- 36 Toys
- 37 animals
- 38 camera
- 39 efficient
- 40 competitions

If you score...

0-11	12-27	28-40
you are unlikely to get an acceptable score under examination conditions and we recommend that you spend a lot of time improving your English before you take IELTS.	you may get an acceptable score under examination conditions but we recommend that you think about having more practice or lessons before you take IELTS.	you are likely to get an acceptable score under examination conditions but remember that different institutions will find different scores acceptable.